

Dear Partners,



April 22nd, 2022

Shiba Park Hotel 【Tokyo, JAPAN】

We are selling an accommodation plan where you will enjoy an afternoon tea as part of your room service. (Limited to one day and three rooms.)

Perfect for a girls-only overnight gathering and people accompanied by small children.

Throughout the year, beginning on April 15th (Fri.), 2022, Shiba Park Hotel is selling an accommodation plan limited to one day and three rooms, where you will enjoy an afternoon tea as part of your room service. In the private space of a guest room, you can enjoy an afternoon tea to your heart's content without worrying about the eyes of those around you. You can also bring any of the 1,500 volumes of books in the building to your room.



Afternoon tea in the living room of the junior suite * The photo is for 2 people

Summary of the Accommodation Plan

- * As part of your room service, you can consume a "blissful afternoon tea," where you can enjoy three types of sweets: Japanese, Chinese, and Western.
- * Dining hours are 4:00 - 7:00 P.M. You can use the afternoon tea in place of dinner.
- * In the private space of your room, you can enjoy an afternoon tea without worrying about the eyes of those around you.

Suggested Scenes for Which to Use the Plan

- * When you want to enjoy an afternoon tea and talk with friends to your heart's content without any time limits
- * When small children accompany you on a family trip
- * When you want to enjoy reading books leisurely while having some delicious sweets

Name of Plan: "Afternoon Tea in Your Room." A hide-away plan where you can enjoy books and Japanese, Chinese, and Western sweets. *Amenities are included!

Accommodation Period: We sell the plan throughout the year from April 15th (Fri.). *We started to accept reservations on April 11th (Mon.).

Types of Guest Rooms: Junior suite (twin), Deluxe twin

Charges: 1 room, ¥39,600 (tax and service charges included). - Subject to change. *The charge is per person.

Check-in is at 4:00 P.M. Check-out is at noon.

Amenities: A face pack is included.

Rooms for this package



Junior Suite

【Capacity】 44 m²

【Bed】 2 beds / width 1,100 mm × length 1,950 mm

【Guests】 2

* Extra bed can be used * Baby bed can be installed



Deluxe Twin

【Capacity】 32 m²

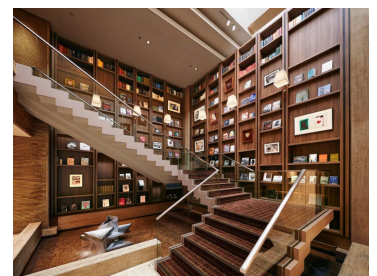
【Bed】 2 beds / width 1,200 mm × length 1,950 mm

【Guests】 2

* Extra bed can be used * Baby bed can be installed

About Shiba Park Hotel

Shiba Park Hotel was founded in 1948 and started its operations as a hotel for foreign trade delegations. Based in Shiba, which is an area with a lushly green history, we have carried a sense of pride in and responsibility toward the region's traditions and culture. In the fall of 2021, we renovated the central grand stairway and the second-floor lobby. In December of that year, renovations were made to some guest rooms and we were reborn as a library hotel. There are about 1,500 volumes of books curated by Ginza Tsutaya Bookstore in the building. On the first floor is a restaurant where you can enjoy three types of cuisine: Japanese, Chinese, and Western. The second floor is furnished with four banquet halls.



Central Grand Staircase
about 7m in height

Official Webpage <https://www.shibaparkhotel.com/en/>

Inquiries and Reservations : Shiba Park Hotel +81-3-3433-4141

Contact

Public Relation - Emi Sotome (Ms)

sotome@shibaparkhotel.com TEL : +81-3-3433-4141 FAX : +81-3-5470-7515