



An Art Museum Where You Can Stay In

まるで泊まれる美術館

Brand Book

Confidential



PARK HOTEL
TOKYO

<https://parkhoteltokyo.com/>

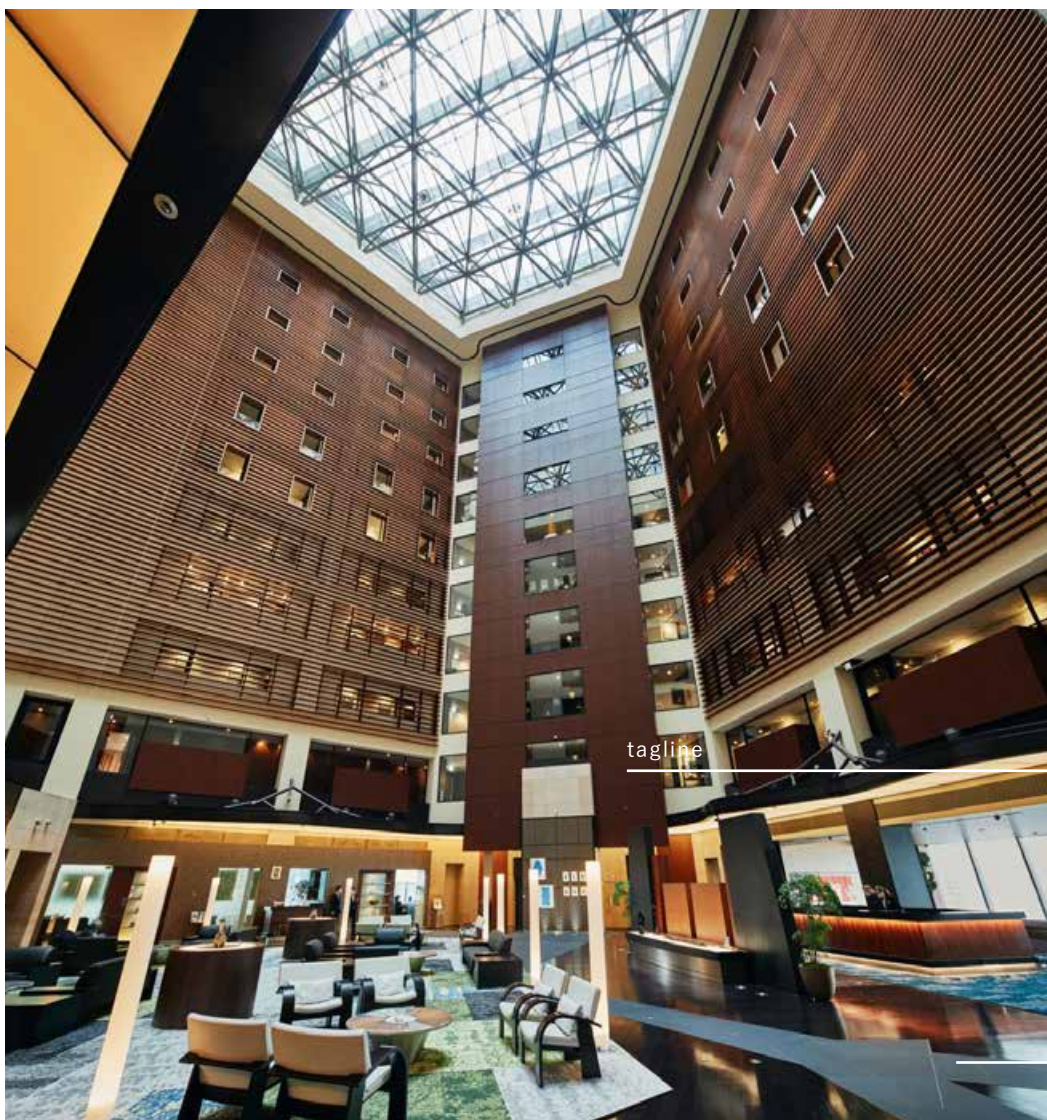
Park Hotel Tokyo **Brand Book** Confidential

Contents

Hotel Concept	ホテルコンセプト
Executive Museum Lounge “ATRIUM”	エグゼクティブ ミュージアムラウンジ アトリウム
Hotel Art Selection	ホテルアート紹介
Omotenashi Concierge	おもてなしコンシェルジュ
Restaurants & Bar	レストラン & バー
Reception & Rooms	レセプション & 客室
Artist Room	アーティストルーム
SDGs	SDGs
Experience Story	ホテルの過ごし方
Location	ロケーション



An Art Museum Where You Can Stay In Art Hotel in the Sky Where an Extraordinary Time Awaits
まるで泊まれる美術館 ここは非日常を楽しむ天空のアートホテル



tagline

An Art Museum Where You Can Stay In
Art Hotel in the Sky Where an Extraordinary Time Awaits

まるで泊まれる美術館
ここは非日常を楽しむ天空のアートホテル

An Art Museum Where You Can Stay In Art Hotel in the Sky Where an Extraordinary Time Awaits

まるで泊まれる美術館 ここは非日常を楽しむ天空のアートホテル





Hotel Concept

Infinite time and space amid cognizant Japanese beauty

日本の美意識が体感できる時空間

An Art Museum Where You Can Stay In Art Hotel in the Sky Where an Extraordinary Time Awaits

まるで泊まれる美術館 ここは非日常を楽しむ天空のアートホテル





Concept Story

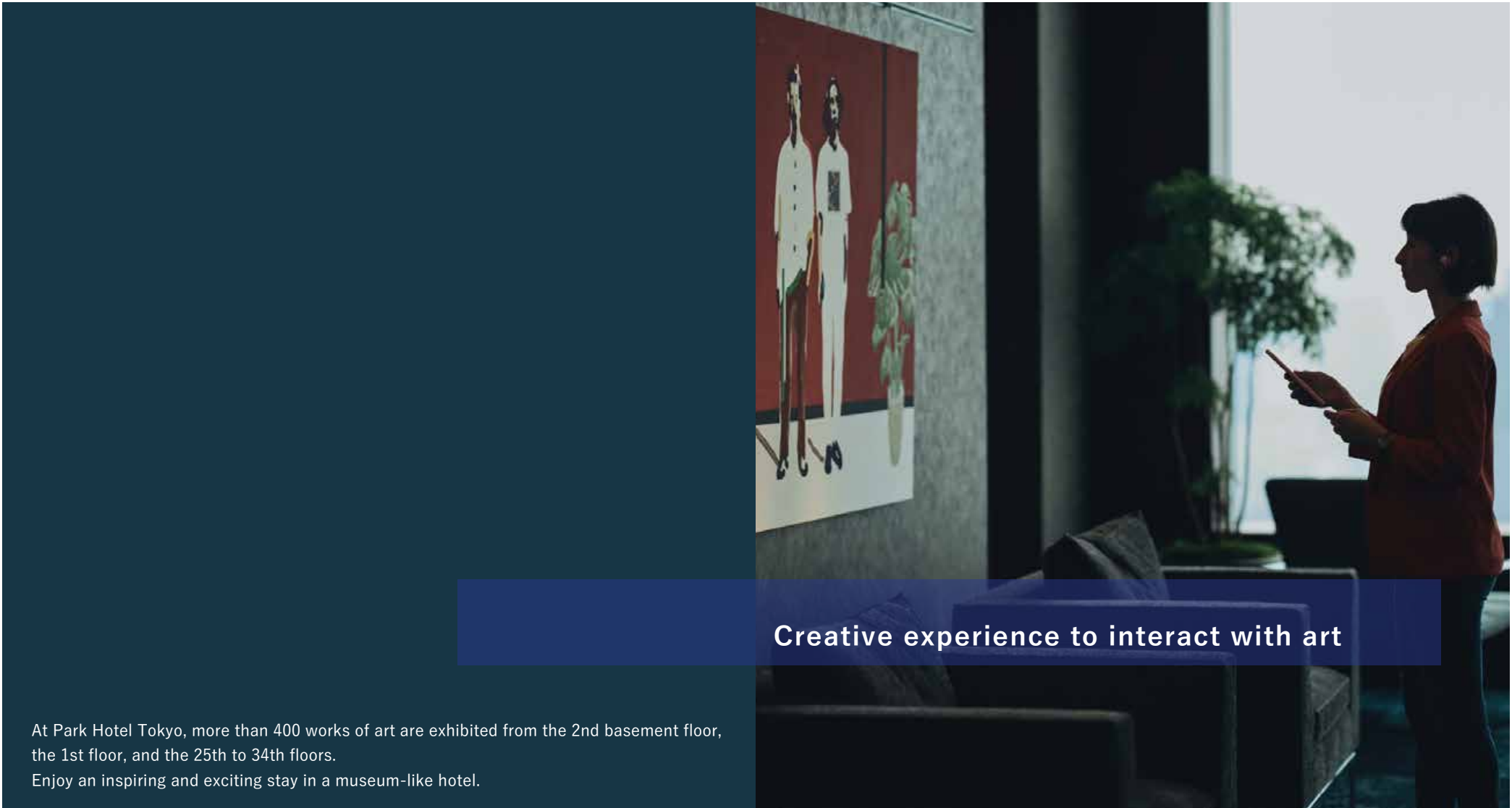
Park Hotel Tokyo has been hoping that by creating a "Infinite time and space amid cognizant Japanese beauty" that incorporates art, guests can feel and enjoy the beauty, delicacy, and strength of Japanese culture with all of their five senses. We hope that you will be refreshed in an art-based hospitality and extraordinary space, and that the staff who fully understand it will be able to provide creative hospitality on their own.

We are aiming for an art-like beautiful hotel that offers fresh and rich time.

An Art Museum Where You Can Stay In Art Hotel in the Sky Where an Extraordinary Time Awaits

まるで泊まれる美術館 ここは非日常を楽しむ天空のアートホテル





Creative experience to interact with art

At Park Hotel Tokyo, more than 400 works of art are exhibited from the 2nd basement floor, the 1st floor, and the 25th to 34th floors.
Enjoy an inspiring and exciting stay in a museum-like hotel.

An Art Museum Where You Can Stay In Art Hotel in the Sky Where an Extraordinary Time Awaits
まるで泊まれる美術館 ここは非日常を楽しむ天空のアートホテル



<https://parkhoteltokyo.com/art-at-park-hotel-tokyo/>



EXECUTIVE MUSEUM LOUNGE “ATRIUM”

25^F
ATRIUM

The design concept of the atrium, which is about 30 meters and has a feeling of openness, is the entrance garden of the museum. You can deeply relax with heavy furnitures that imaged immovable stones on a carpet with a sand pattern that resembles a dry garden.

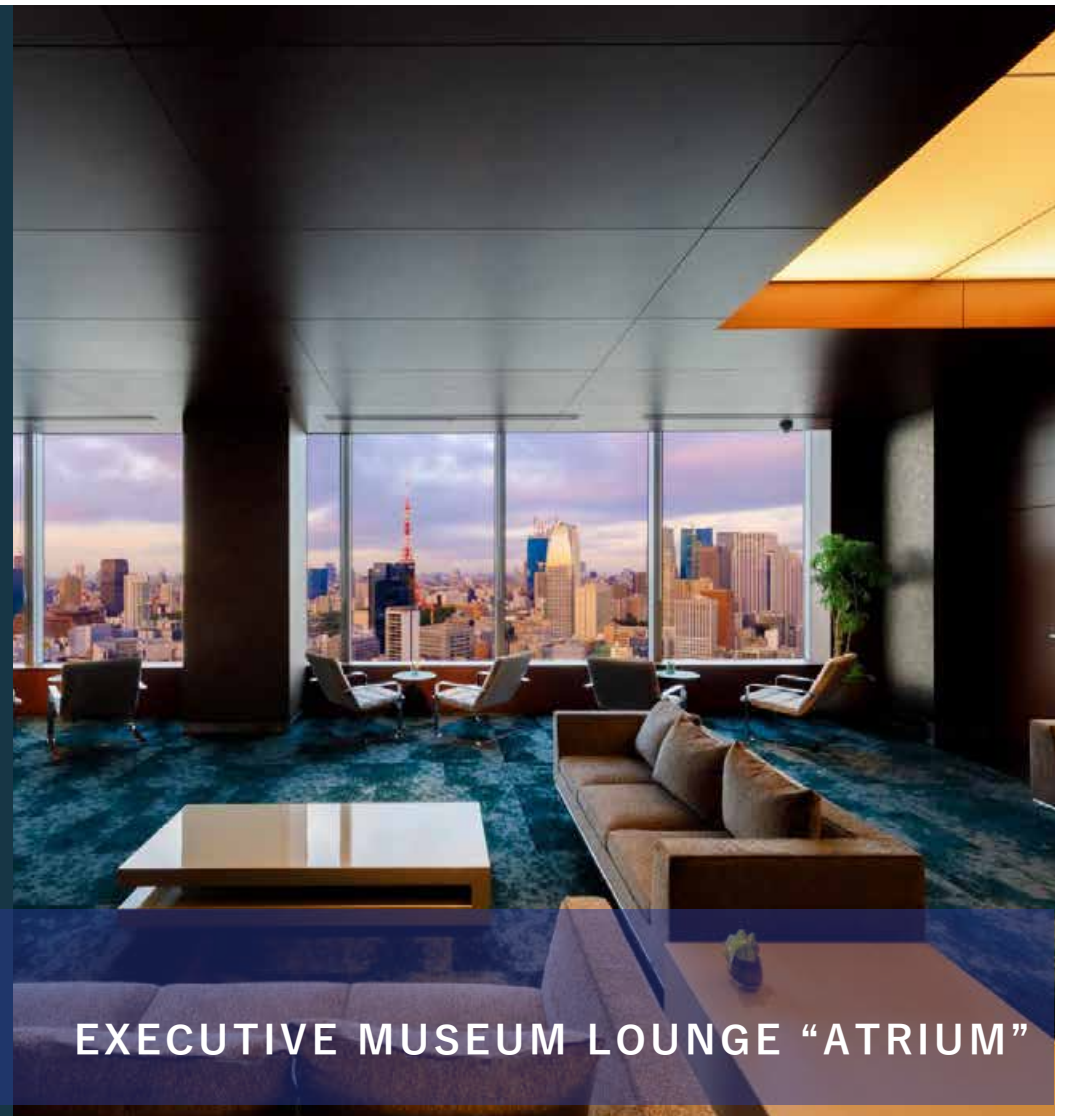
An Art Museum Where You Can Stay In Art Hotel in the Sky Where an Extraordinary Time Awaits
まるで泊まれる美術館 ここは非日常を楽しむ天空のアートホテル



FUJIN AND RAIJIN

風神雷神

God of Wind (Fujin) and God of Thunder (Raijin) are often placed on both sides of the gate or entrance of a building. This is because they are considered to be guardian deities that keep evil spirits and other bad things from entering the premises. At Park Hotel Tokyo, they are here to protect you from bad things entering the hotel.



EXECUTIVE MUSEUM LOUNGE "ATRIUM"

An Art Museum Where You Can Stay In Art Hotel in the Sky Where an Extraordinary Time Awaits

まるで泊まれる美術館 ここは非日常を楽しむ天空のアートホテル



Take an ART walk in a museum-like hotel

At Park Hotel Tokyo, you don't have to leave the hotel to enjoy the Arts. From check-in to check-out, you can enjoy a unique Art-filled stay.

Audio Guide

Enjoy an audio guide by scanning the above QR code. Please use your personal headphones when listening to the audio.



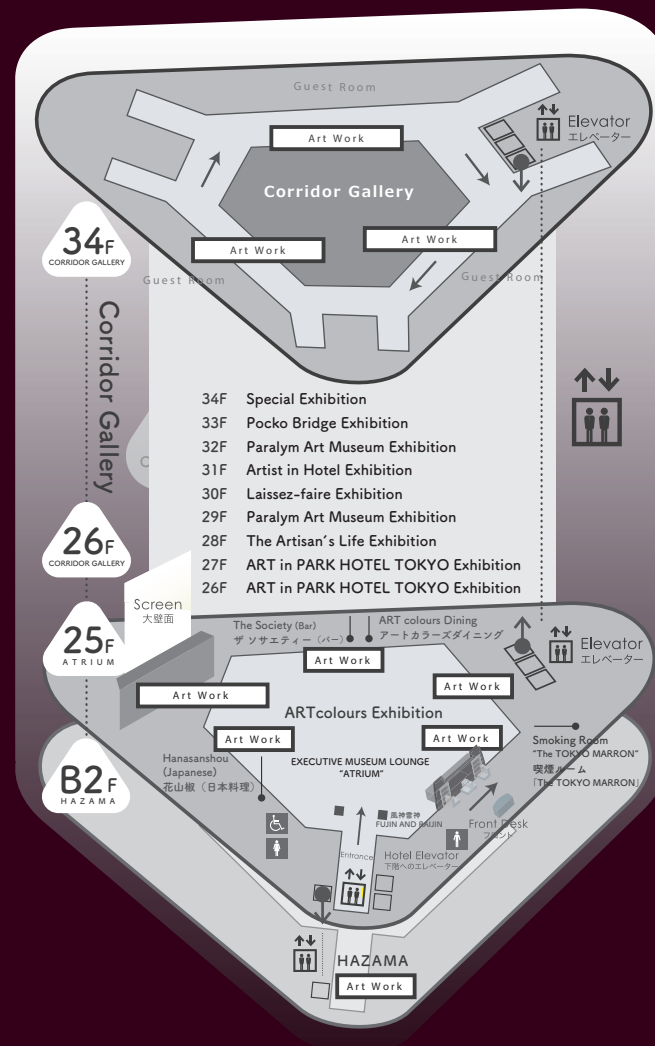
Audio Guide

An Art Museum Where You Can Stay In Art Hotel in the Sky Where an Extraordinary Time Awaits
まるで泊まれる美術館 ここは非日常を楽しむ天空のアートホテル



ART colours Exhibition & CORRIDOR GALLERY

- 34F Special Exhibition
- 33F Pocko Bridge Exhibition
- 32F Paralym Art Museum Exhibition
- 31F Artist in Hotel Exhibition
- 30F Laissez-faire Exhibition
- 29F Paralym Art Museum Exhibition
- 28F The Artisan's Life Exhibition
- 27F ART in PARK HOTEL TOKYO Exhibition
- 26F ART in PARK HOTEL TOKYO Exhibition
- 25F ARTcolours Exhibition
- B2F HAZAMA (interstitial space)



An Art Museum Where You Can Stay In Art Hotel in the Sky Where an Extraordinary Time Awaits

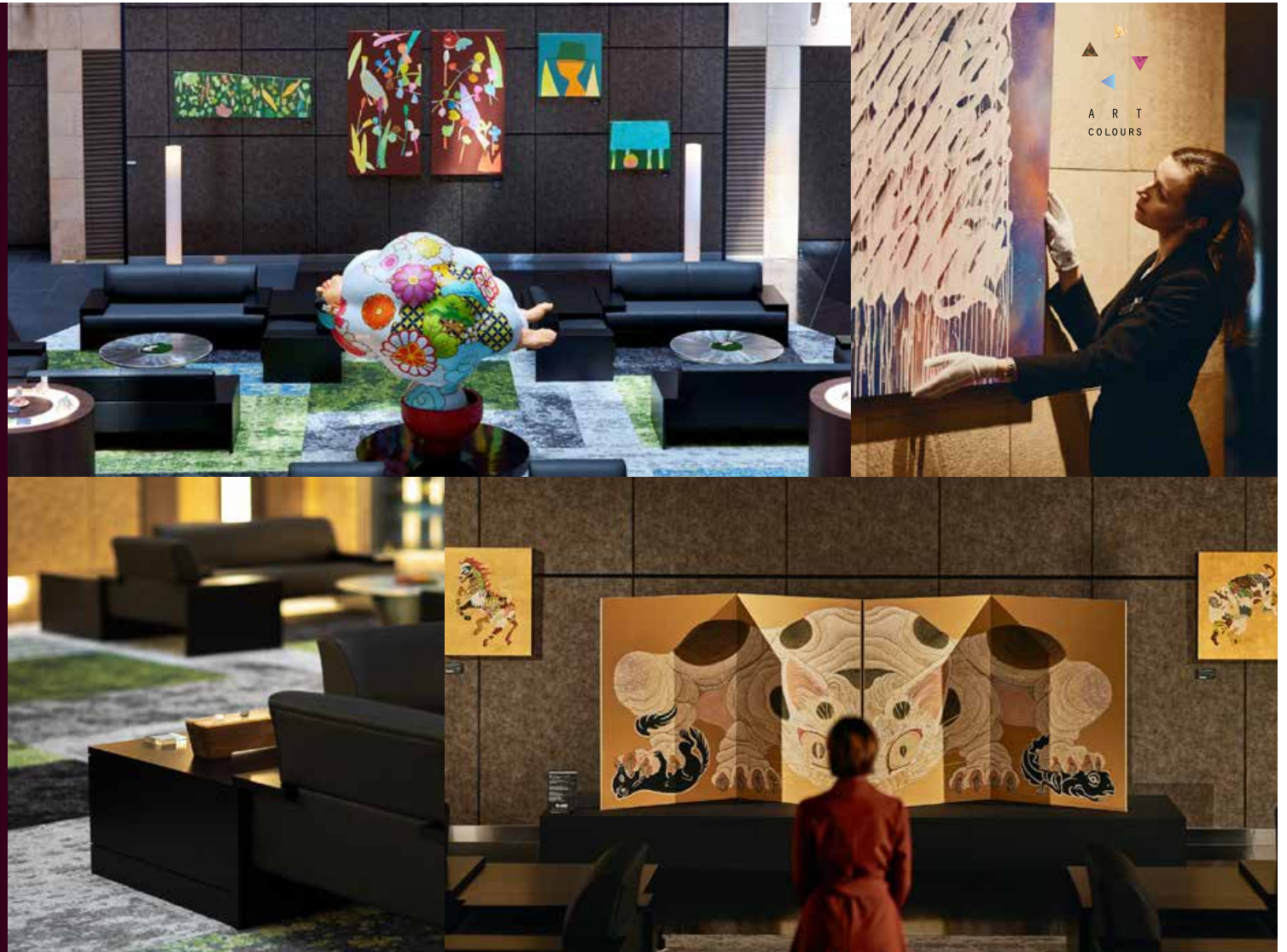
まるで泊まれる美術館 ここは非日常を楽しむ天空のアートホテル



Record the Passing Time and Space with Artists

ART colours Exhibition

As part of our Art initiatives, we hold series of art exhibitions called "ART colours" at the Atrium to welcome our guests with hospitality in the form of "arrangement". The exhibition will be held throughout the year, and it is an exhibition of artworks with a sense of the season that is delicate with time and space.



An Art Museum Where You Can Stay In Art Hotel in the Sky Where an Extraordinary Time Awaits

まるで泊まれる美術館 ここは非日常を楽しむ天空のアートホテル

CORRIDOR GALLERY



An Art Museum Where You Can Stay In Art Hotel in the Sky Where an Extraordinary Time Awaits
まるで泊まれる美術館 ここは非日常を楽しむ天空のアートホテル



THANN Sanctuary

Asian-born natural skin care brand spa

The Asian-born natural skin care brand spa "Tan Sanctuary" is a stylish salon full of exotic scents. You can experience a blissful time with Thailand's unique hospitality. In addition, the store in the home country has won high praise, such as being selected as "Hot 55 spas of the world" by the prestigious travel magazine "Condé Nast Traveler" in the United States. Available for men and women.

An Art Museum Where You Can Stay In Art Hotel in the Sky Where an Extraordinary Time Awaits
まるで泊まれる美術館 ここは非日常を楽しむ天空のアートホテル



<https://parkhoteltokyo.com/service/thann-sanctuary/>



ART SHOP TANAGOKORO_g アートショップ 掌_g

Experience real Japanese craftsmanship at first hand. Exhibition sales of traditional Japanese handcrafts will give an aesthetic sense of Japan through art.

アートショップ“掌”_gでは、“本物の日本の技”を体感して頂けるよう、
伝統工芸品を季節に合わせて、展示販売しております。
“本物の日本の技”の再認識とそれに触れる事ができる場を提供しております。

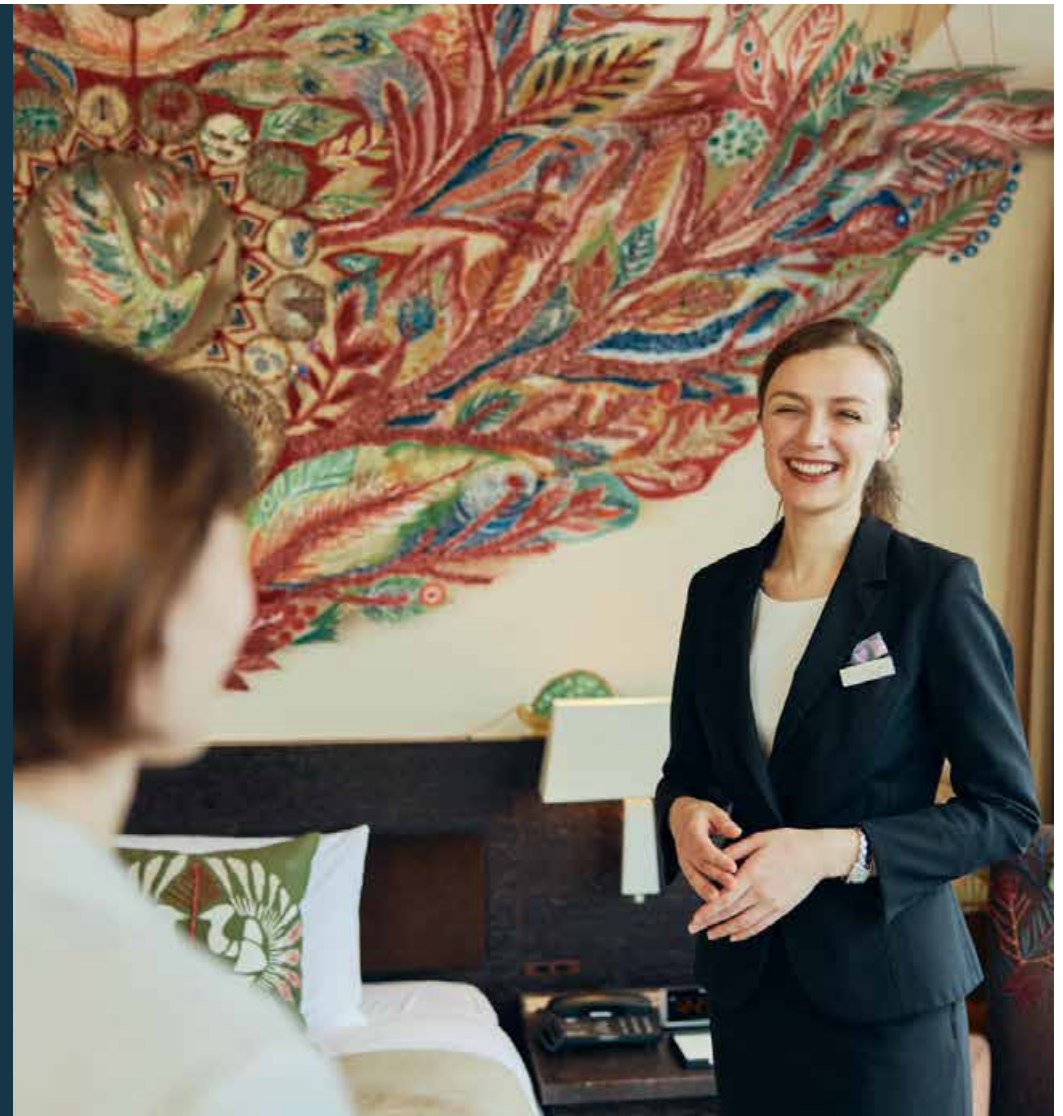
An Art Museum Where You Can Stay In Art Hotel in the Sky Where an Extraordinary Time Awaits
まるで泊まれる美術館 ここは非日常を楽しむ天空のアートホテル

OMOTENASHI Concierge

Spaces have been set up for guests to experience the Japanese aesthetic sense in Park Hotel Tokyo with the concept of incorporating art in unique Japanese-style omotenashi, with initiatives being carried out for them to experience Japanese aesthetics in each of the ART (Atrium, Restaurant and Travel) scenes.

The “OMOTENASHI Concierge” had started from the Art Concierge in 2016, extended to the Lobby Concierge and the Restaurant Concierge. Now the 3 concierges work together as the “OMOTENASHI Concierge” as the specialists of Park Hotel Tokyo’s omotenashi, to guide guests according to their individual preferences, and help them to make their stay a more memorable one.

We will be maximizing the role that Japanese aesthetics and hospitality can play to offer a memorable hotel experience in various parts of Park Hotel Tokyo.



An Art Museum Where You Can Stay In Art Hotel in the Sky Where an Extraordinary Time Awaits

まるで泊まれる美術館 ここは非日常を楽しむ天空のアートホテル



ART
&
TASTE

RESTAURANTS & BAR

Hanasanshou
花山椒

ART colours Dining
アートカラーズダイニング

Bar The Society
バー ザソサエティ

News Art Café
ニュース アート カフェ

An Art Museum Where You Can Stay In Art Hotel in the Sky Where an Extraordinary Time Awaits
まるで泊まれる美術館 ここは非日常を楽しむ天空のアートホテル



<https://parkhoteltokyo.com/restaurants-bar/>

花山椒
Hanasanshou

Hanasanshou

花山椒

A Japanese restaurant that combines Japanese and Modern cuisine. Enjoy traditional Japanese Kaiseki cuisine.



An Art Museum Where You Can Stay In Art Hotel in the Sky Where an Extraordinary Time Awaits
まるで泊まれる美術館 ここは非日常を楽しむ天空のアートホテル





A R T
COLOURS

Dining



ART colours Dining

アートカラーズダイニング

A space brimming with creativity where guests savor meals surrounded by artwork in a unique, museum-like atmosphere.

An Art Museum Where You Can Stay In Art Hotel in the Sky Where an Extraordinary Time Awaits

まるで泊まれる美術館 ここは非日常を楽しむ天空のアートホテル





THE SOCIETY



Bar The Society

バー ザソサエティ

Enjoy whisky at The Society, the first bar in Japan that gained official recognition by The Scotch Malt Whisky Society.



An Art Museum Where You Can Stay In Art Hotel in the Sky Where an Extraordinary Time Awaits
まるで泊まれる美術館 ここは非日常を楽しむ天空のアートホテル





News Art Café

ニュース アート カフェ

A friendly open space located on the 1st floor of the Park Hotel Tokyo, where you can enjoy teas, coffees.

An Art Museum Where You Can Stay In Art Hotel in the Sky Where an Extraordinary Time Awaits

まるで泊まれる美術館 ここは非日常を楽しむ天空のアートホテル





ART
&
TASTE



An Art Museum Where You Can Stay In Art Hotel in the Sky Where an Extraordinary Time Awaits
まるで泊まれる美術館 ここは非日常を楽しむ天空のアートホテル



Reception & Rooms



An Art Museum Where You Can Stay In Art Hotel in the Sky Where an Extraordinary Time Awaits
まるで泊まれる美術館 ここは非日常を楽しむ天空のアートホテル



<https://parkhoteltokyo.com/rooms-suites/>



Reception

Rooms connected by a corridor from the atrium. The guest rooms, which feature large windows, offer a panoramic view of Tokyo, and offer an elegant atmosphere with a spacious high ceiling. A pocket coil bed that fits your body gently and allows you to rest comfortably in a comfortable position promises a comfortable sleep. Wifi connection is available in all rooms.

An Art Museum Where You Can Stay In Art Hotel in the Sky Where an Extraordinary Time Awaits
まるで泊まれる美術館 ここは非日常を楽しむ天空のアートホテル





single

【Room Size】 19 m²

【Number and size of Bed】

One W : 1,400mm/L : 1,950mm

An Art Museum Where You Can Stay In Art Hotel in the Sky Where an Extraordinary Time Awaits

まるで泊まれる美術館 ここは非日常を楽しむ天空のアートホテル





Queen / Twin

Queen

【Room Size】 22 m²

【Number and size of Bed】

One W : 1,600mm/L : 1,950mm

Twin

【Room Size】 22 m²

【Number and size of Bed】

Two W : 1,100mm/L : 1,950mm

An Art Museum Where You Can Stay In Art Hotel in the Sky Where an Extraordinary Time Awaits

まるで泊まれる美術館 ここは非日常を楽しむ天空のアートホテル

Corner twin
Corner King
/Tokyo Tower Side

Corner twin
【Room Size】 26 m²
【Number and size of Bed】
Two W : 1,100mm/L : 1,950mm

Corner King
【Room Size】 26 m²
【Number and size of Bed】
One W : 2,100mm/L : 1,950mm



An Art Museum Where You Can Stay In Art Hotel in the Sky Where an Extraordinary Time Awaits
まるで泊まれる美術館 ここは非日常を楽しむ天空のアートホテル



DeluxeTwin /Deluxe King

DeluxeTwin

【Room Size】 33 m²

【Number and size of Bed】

Two W : 1,100m m/L : 1,950m m

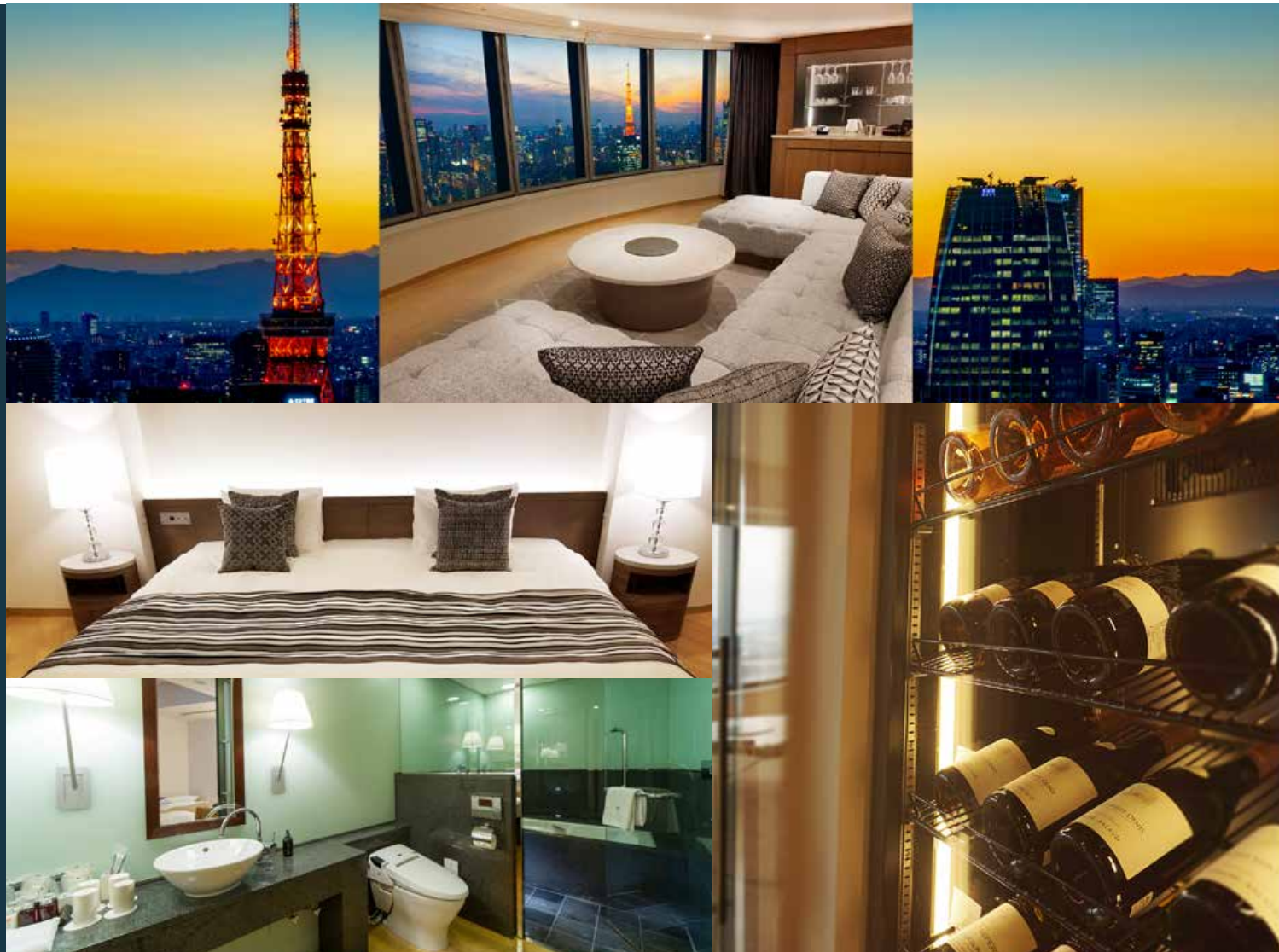
Deluxe King

【Room Size】 26 m²

【Number and size of Bed】

One W : 2,100m m/L : 1,950m m

An Art Museum Where You Can Stay In Art Hotel in the Sky Where an Extraordinary Time Awaits
まるで泊まれる美術館 ここは非日常を楽しむ天空のアートホテル



Park Suite

【Room Size】 80 m²
【Number and size of Bed】
One W : 2,400mm/L : 1,950mm

An Art Museum Where You Can Stay In Art Hotel in the Sky Where an Extraordinary Time Awaits
まるで泊まれる美術館 ここは非日常を楽しむ天空のアートホテル



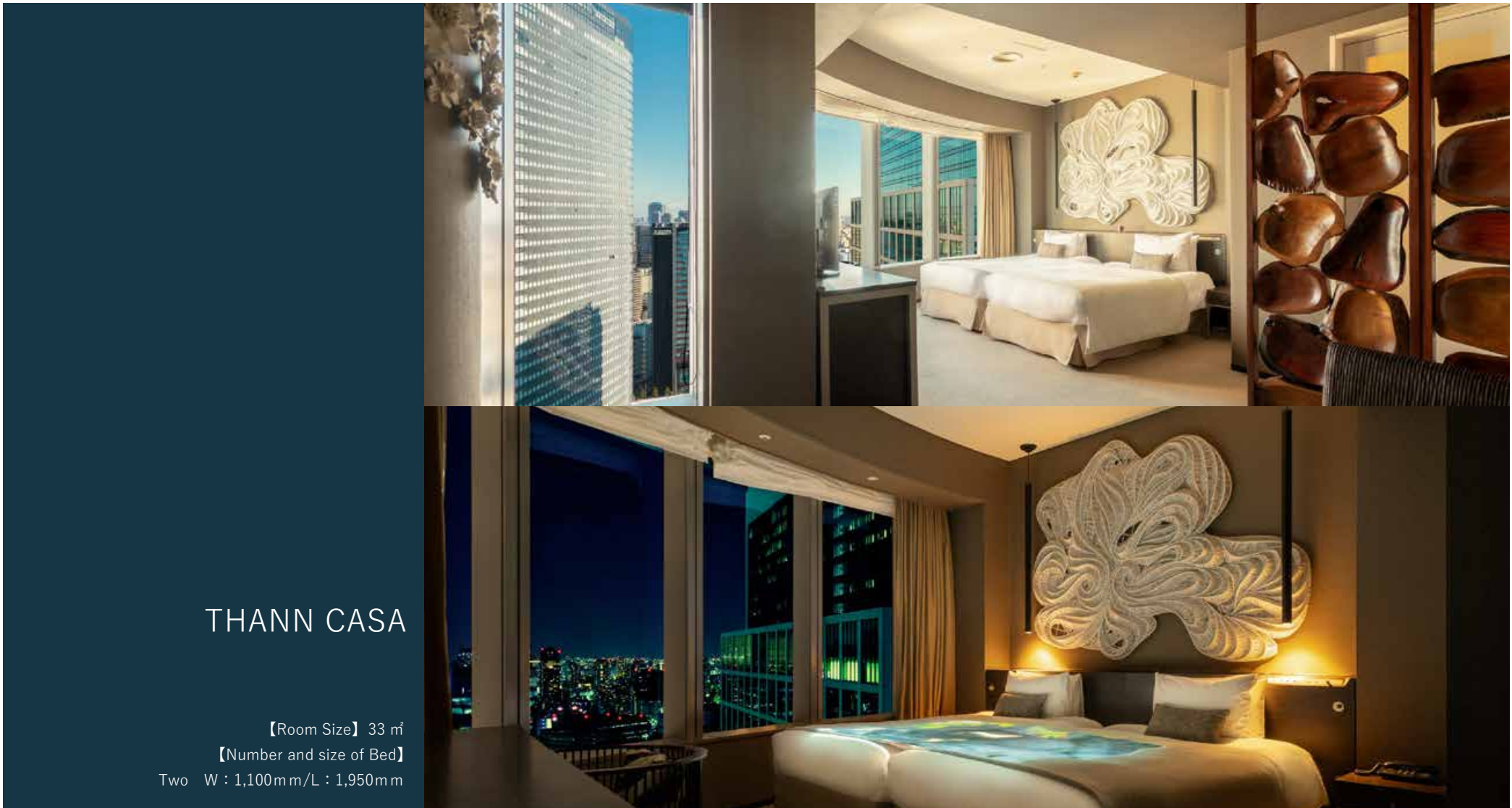
Barrier-free Room

【Room Size】 26 m²

【Number and size of Bed】

Two W : 1,100mm/L : 1,950mm

An Art Museum Where You Can Stay In Art Hotel in the Sky Where an Extraordinary Time Awaits
まるで泊まれる美術館 ここは非日常を楽しむ天空のアートホテル



THANN CASA

【Room Size】 33 m²

【Number and size of Bed】

Two W : 1,100mm/L : 1,950mm

An Art Museum Where You Can Stay In Art Hotel in the Sky Where an Extraordinary Time Awaits

まるで泊まれる美術館 ここは非日常を楽しむ天空のアートホテル





Artist in Hotel

Artist Room

The "Artist in Hotel" Project

Based on the concept of "Infinite time and space amid cognizant Japanese beauty", Park Hotel Tokyo has created a set of themes known as ART (Atrium, Restaurant, and Travel) and incorporated art allowing guests to experience Japanese aesthetics in the context of each of these themes. Providing a venue for artists to share their activities and information, we are taking on the role of a platform for the dissemination of Japanese culture, art and hospitality to our guests from all over the globe. One part of this effort is the "Artist in Hotel" project. In the project, the artist himself stayed at the hotel to absorb the atmosphere, and with the theme of "Beauty of Japan," fashioned a standard guest room into a work of art with the experience and inspiration through their stay. The hotel's guest rooms themselves are works of art with nothing like them anywhere else in the world.



An Art Museum Where You Can Stay In Art Hotel in the Sky Where an Extraordinary Time Awaits

まるで泊まれる美術館 ここは非日常を楽しむ天空のアートホテル

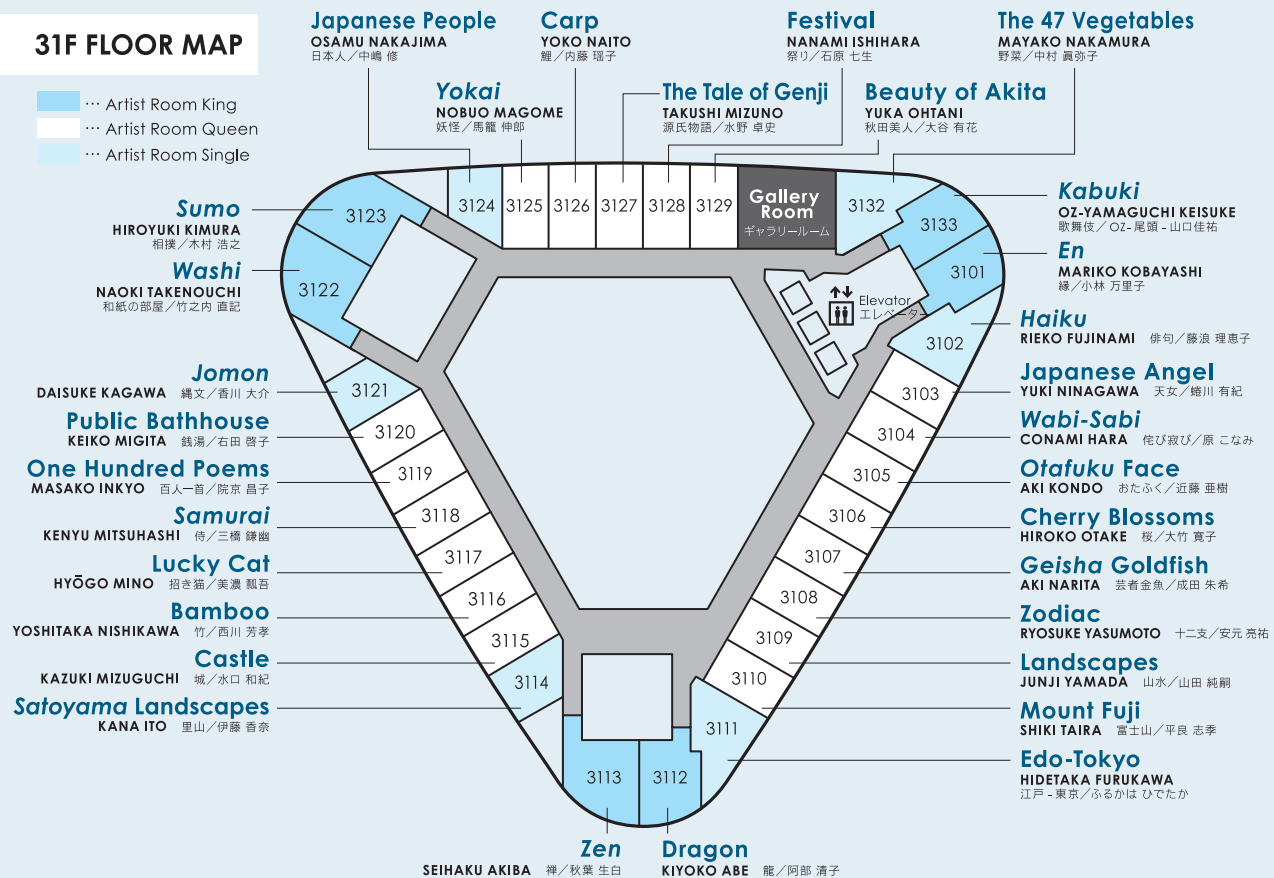


PARK HOTEL
T O K Y O

<https://parkhoteltokyo.com/rooms-suites/artist-floor/>

31F FLOOR MAP

- ... Artist Room King
- ... Artist Room Queen
- ... Artist Room Single



Artist in Hotel

Artist Room

The "Artist in Hotel" Project

An Art Museum Where You Can Stay In Art Hotel in the Sky Where an Extraordinary Time Awaits

まるで泊まれる美術館 ここは非日常を楽しむ天空のアートホテル



ARTIST ROOM

- Artist Room Single
- Artist Room Queen
- Artist Room King



An Art Museum Where You Can Stay In Art Hotel in the Sky Where an Extraordinary Time Awaits
まるで泊まれる美術館 ここは非日常を楽しむ天空のアートホテル



1 of 31 Artist Rooms Introduction

Artist Room En NO.31
BY MARIKO KOBAYASHI

For every turn of Fortune's wheel, there's a time when you feel you have a secret bond with the "supernatural" beyond your own intentions and choices, which might give you or deny you these "en", and guide you somewhere else. I think that in today's changing times, we've forgotten that such inter-relationships do exist. We are connected with everything we encountered so far, and our world will continue to expand as it connects with everything we meet. I hope that your "en" with Japan, this room, and everything that happens to you in future, will be good.

An Art Museum Where You Can Stay In Art Hotel in the Sky Where an Extraordinary Time Awaits
まるで泊まれる美術館 ここは非日常を楽しむ天空のアートホテル

SUSTAINABLE DEVELOPMENT GOALS

What we can do to contribute
to a sustainable journey



Activities of SDGs at Park Hotel Tokyo

An Art Museum Where You Can Stay In Art Hotel in the Sky Where an Extraordinary Time Awaits
まるで泊まれる美術館 ここは非日常を楽しむ天空のアートホテル



<https://parkhoteltokyo.com/sdgs/>

SUSTAINABLE DEVELOPMENT GOALS



○ Creating a place for activities by artists with disabilities and supporting their independence

○ Efforts for "ethical" consumption behavior that considers people, society, and the global environment

○ Measures for paper resources

○ Providing mineral water for guest rooms in paper carton products

An Art Museum Where You Can Stay In Art Hotel in the Sky Where an Extraordinary Time Awaits

まるで泊まれる美術館 ここは非日常を楽しむ天空のアートホテル

Activities you can experience at the property



An Art Museum Where You Can Stay In Art Hotel in the Sky Where an Extraordinary Time Awaits
まるで泊まれる美術館 ここは非日常を楽しむ天空のアートホテル





Exhibiting more than 400 works of art

Please spend a luxurious day immersing yourself in art while feeling the seasons and culture of Japan through art, forgetting the hustle and bustle of everyday life in a space where time flows slowly like a museum.

An Art Museum Where You Can Stay In Art Hotel in the Sky Where an Extraordinary Time Awaits

まるで泊まれる美術館 ここは非日常を楽しむ天空のアートホテル



Hotel tour "ART walk" using audio guide.

Throughout the season, the art exhibition ART colors, which has a sense of the seasons that change over time with art works, and the theme of "Art for all", were set up with the desire to make art more familiar. In addition to exhibits such as "Corridor Gallery", you can relax and enjoy a tour that introduces the charm of Park Hotel Tokyo, such as art works and artist rooms installed in various places.



Residence work "Hazama" inspired by "Alley leading to the tea room"



"Roji" is an area where you prepare your mind to go to tea room. Pathing through the "Roji", you may feel like you are pathing from everyday life to extraordinary life. Take a deep breath with a world view that expresses the beauty of space unique to Japan in a modern way.

An Art Museum Where You Can Stay In Art Hotel in the Sky Where an Extraordinary Time Awaits

まるで泊まれる美術館 ここは非日常を楽しむ天空のアートホテル



Record the Passing
Time and Space with Artists
ART colours Exhibition

Held throughout the spring, summer, fall and winter, it expresses the atmosphere and culture that change with the seasons of Japan through art. Experience the scenery you draw, which can only be found here, in a relaxing time and space like a museum.



CORRIDOR GALLERY



Under the theme of "Art for all," the "Corridor Gallery" was created with the desire to make art feel closer to you. A wide variety of works are exhibited on 9 floors with different themes. Please take your time to take a look.

An Art Museum Where You Can Stay In Art Hotel in the Sky Where an Extraordinary Time Awaits
まるで泊まれる美術館 ここは非日常を楽しむ天空のアートホテル



Enjoy authentic Japanese cuisine
at Hanasanshou
or dinner at ART Colours Dining.

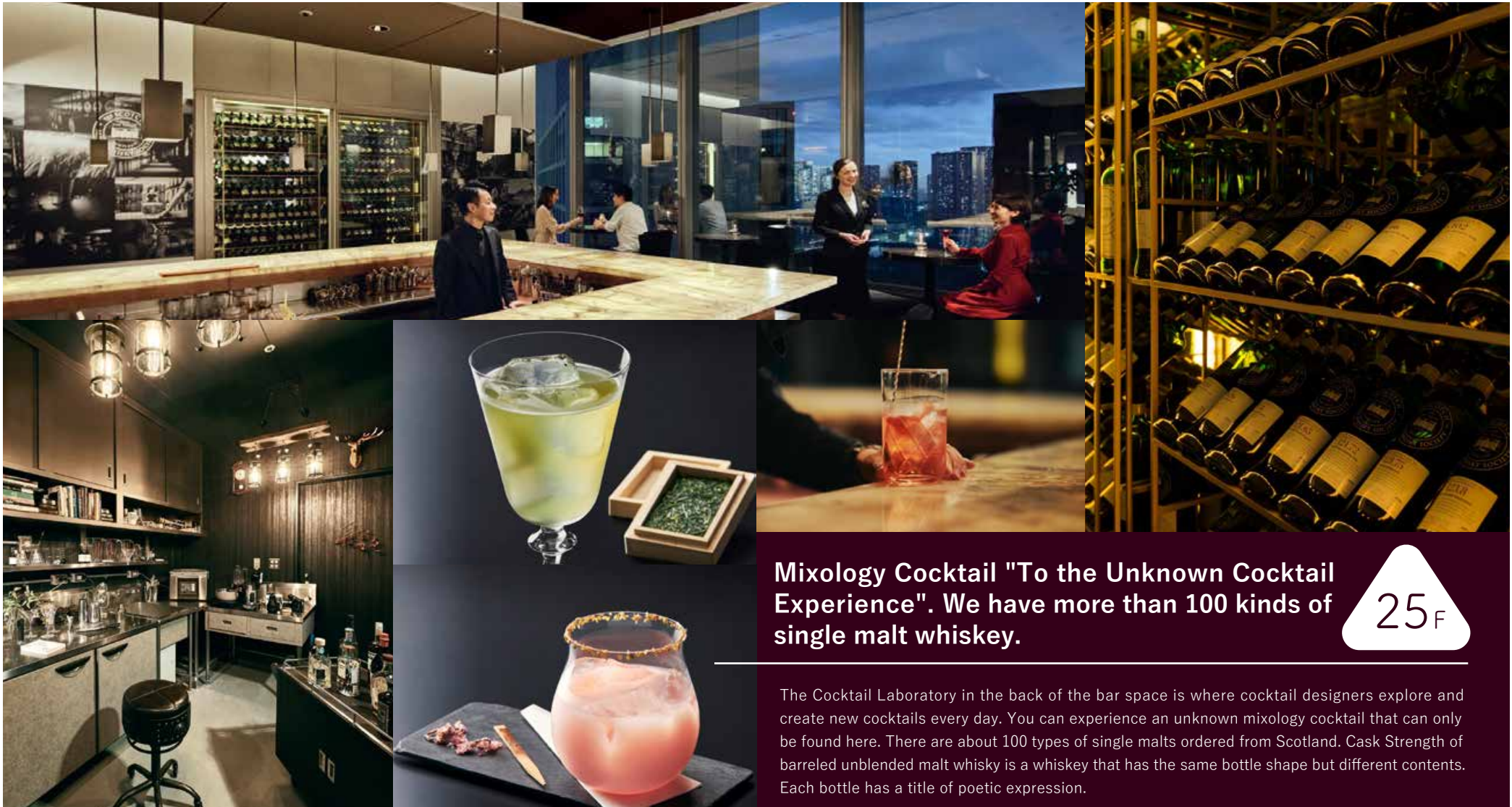
25_F

"Hanasanshou" is in a great location on the 25th floor. The cuisine is traditional Kaiseki using seasonal ingredients. ART Colours Dining is a creative space surrounded by art works, and is characterized by the atmosphere of enjoying a meal in the museum.



An Art Museum Where You Can Stay In Art Hotel in the Sky Where an Extraordinary Time Awaits

まるで泊まれる美術館 ここは非日常を楽しむ天空のアートホテル



Mixology Cocktail "To the Unknown Cocktail Experience". We have more than 100 kinds of single malt whiskey.

25_F

The Cocktail Laboratory in the back of the bar space is where cocktail designers explore and create new cocktails every day. You can experience an unknown mixology cocktail that can only be found here. There are about 100 types of single malts ordered from Scotland. Cask Strength of barreled unblended malt whisky is a whiskey that has the same bottle shape but different contents. Each bottle has a title of poetic expression.

An Art Museum Where You Can Stay In Art Hotel in the Sky Where an Extraordinary Time Awaits
 まるで泊まれる美術館 ここは非日常を楽しむ天空のアートホテル



Artist Room

31F

The artist room is an art space that is unique to you in the world. It is also a place to stay, and it is an art that is established by the presence of people.
What do you think, feel and see by being part of art?



Artist in Hotel



An Art Museum Where You Can Stay In Art Hotel in the Sky Where an Extraordinary Time Awaits
まるで泊まれる美術館 ここは非日常を楽しむ天空のアートホテル



25^F

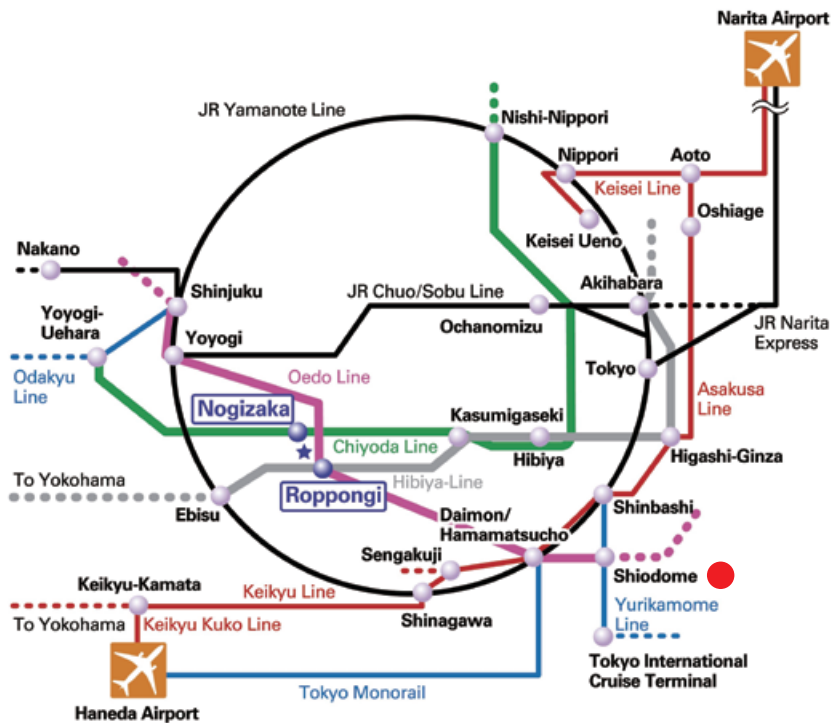
Hotel Breakfast

You can enjoy breakfast at ART Colours Dining. Please spend your time surrounded by art works.

Sightseeing around the area



An Art Museum Where You Can Stay In Art Hotel in the Sky Where an Extraordinary Time Awaits
まるで泊まれる美術館 ここは非日常を楽しむ天空のアートホテル



都営地下鉄大江戸線、東京臨海新交通臨海線ゆりかもめ「汐留」駅より徒歩1分
JR、東京メトロ、都営地下鉄「新橋」駅からも徒歩圏内

東京駅より車で約8分
羽田空港より車で約20分
成田空港より車で約60分
首都高速都心環状線「汐留IC」より車で約2分

Location

An Art Museum Where You Can Stay In Art Hotel in the Sky Where an Extraordinary Time Awaits

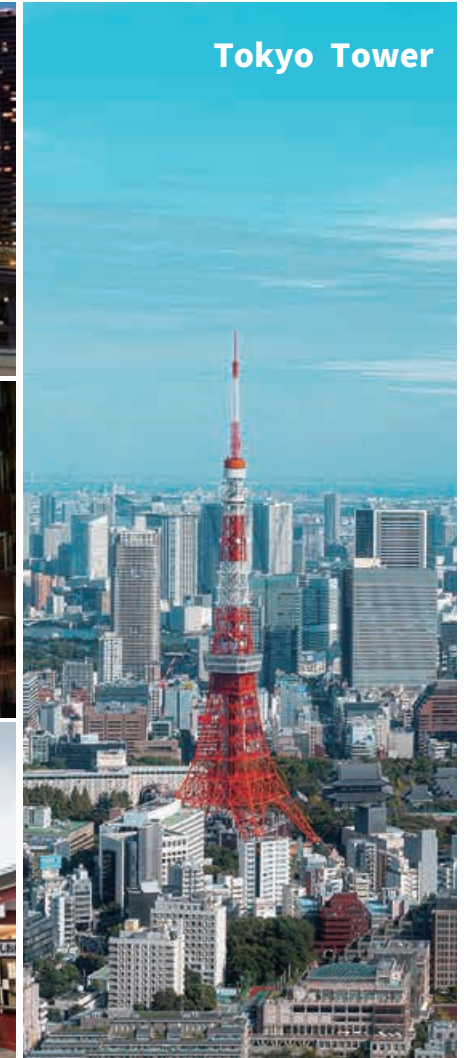
まるで泊まれる美術館 ここは非日常を楽しむ天空のアートホテル



Location



Rainbow-Bridge



Tokyo Tower



Ginza



Shibuya



Akihabara



Shinjyuku



Tokyo-Station



Asakusa

An Art Museum Where You Can Stay In Art Hotel in the Sky Where an Extraordinary Time Awaits
まるで泊まれる美術館 ここは非日常を楽しむ天空のアートホテル



An Art Museum Where You Can Stay In
Art Hotel in the Sky Where an Extraordinary Time Awaits

Publisher Takayuki Suzuki
Editor in Chief Atsushi Ono
Art Director Yoshitomo Fujikawa
Design Design Studio SPH

Park Hotel Tokyo Brand Book
copyright by communication japan Inc.

04/2022

