





PARK HOTEL
TOKYO



Reception & Rooms

An Art Museum Where You Can Stay In Art Hotel in the Sky Where an Extraordinary Time Awaits
まるで泊まれる美術館 ここは非日常を楽しむ天空のアートホテル



<https://parkhoteltokyo.com/rooms/>

Park Suite

Room Size: 80sqm / 861sq ft
Bed Size: 1 wide king bed
W94.5in / L76.8in
Capacity: 2
No. of rooms: 1



An Art Museum Where You Can Stay In Art Hotel in the Sky Where an Extraordinary Time Awaits
まるで泊まれる美術館 ここは非日常を楽しむ天空のアートホテル



DeluxeTwin /Deluxe King

DeluxeTwin
Room Size: 33sqm / 355sq ft
Bed Size: 2 single beds
W43.3in / L76.8in
Capacity: 2

Deluxe King
Room Size: 33sqm / 355sq ft
Bed Size: 1 king bed
W78.7in / 82.7in
Capacity: 2

An Art Museum Where You Can Stay In Art Hotel in the Sky Where an Extraordinary Time Awaits
まるで泊まれる美術館 ここは非日常を楽しむ天空のアートホテル

Corner Twin Corner King /Tokyo Tower Side

Corner Twin

Room Size: 26sqm / 280sq ft

Bed Size: 2 single beds

W43.3in / L76.8in

Capacity: 2

Corner King

Room Size: 26sqm / 280sq ft

Bed Size: 1 king bed

W86.6in / 76.8in

Capacity: 2



An Art Museum Where You Can Stay In Art Hotel in the Sky Where an Extraordinary Time Awaits

まるで泊まれる美術館 ここは非日常を楽しむ天空のアートホテル



Queen / Twin /Tokyo Tower Side

Queen
Room Size: 22sqm / 237sq ft
Bed Size: 1 queen bed
W63.0in / L76.8in
Capacity: 2

Twin
Room Size: 22sqm / 237sq ft
Bed Size: 2 single bed
W43.3in / L76.8in
Capacity: 2

An Art Museum Where You Can Stay In Art Hotel in the Sky Where an Extraordinary Time Awaits
まるで泊まれる美術館 ここは非日常を楽しむ天空のアートホテル

Single

Room Size: 19sqm / 205sq ft
Bed Size: 1 semi-double bed
W55.1in / 76.8in
Capacity: 1



An Art Museum Where You Can Stay In Art Hotel in the Sky Where an Extraordinary Time Awaits
まるで泊まれる美術館 ここは非日常を楽しむ天空のアートホテル



Barrier-free Room

Room Size: 26sqm / 280sq ft

Bed Size: 2 single beds

W43.3in / L76.8in

Capacity: 2

No. of rooms: 1

An Art Museum Where You Can Stay In Art Hotel in the Sky Where an Extraordinary Time Awaits

まるで泊まれる美術館 ここは非日常を楽しむ天空のアートホテル



Artist-in-Residence Project



Artist Rooms



An Art Museum Where You Can Stay In Art Hotel in the Sky Where an Extraordinary Time Awaits
まるで泊まれる美術館 ここは非日常を楽しむ天空のアートホテル



Artist-in-Residence Project



Artist Rooms

Based on the concept of “Infinite time and space amid cognizant Japanese beauty.” Park Hotel Tokyo has created a set of themes known as ART (Atrium, Restaurant, and Travel) and incorporated art allowing guests to experience Japanese aesthetics in the context of each of these themes. Providing a venue for artists to share their activities and information, we are taking on the role of a platform for the dissemination of Japanese culture, art and hospitality to our guests from all over the world. One part of this effort is the “Artist in Hotel” project. In the project, the artists themselves stayed in the hotel to absorb the atmosphere, and with the theme of “Beauty of Japan,” fashioned a standard guest room into a work of art with the experience and inspiration through their stay. The hotel's guest rooms themselves are works of art with nothing like them anywhere else in the world.



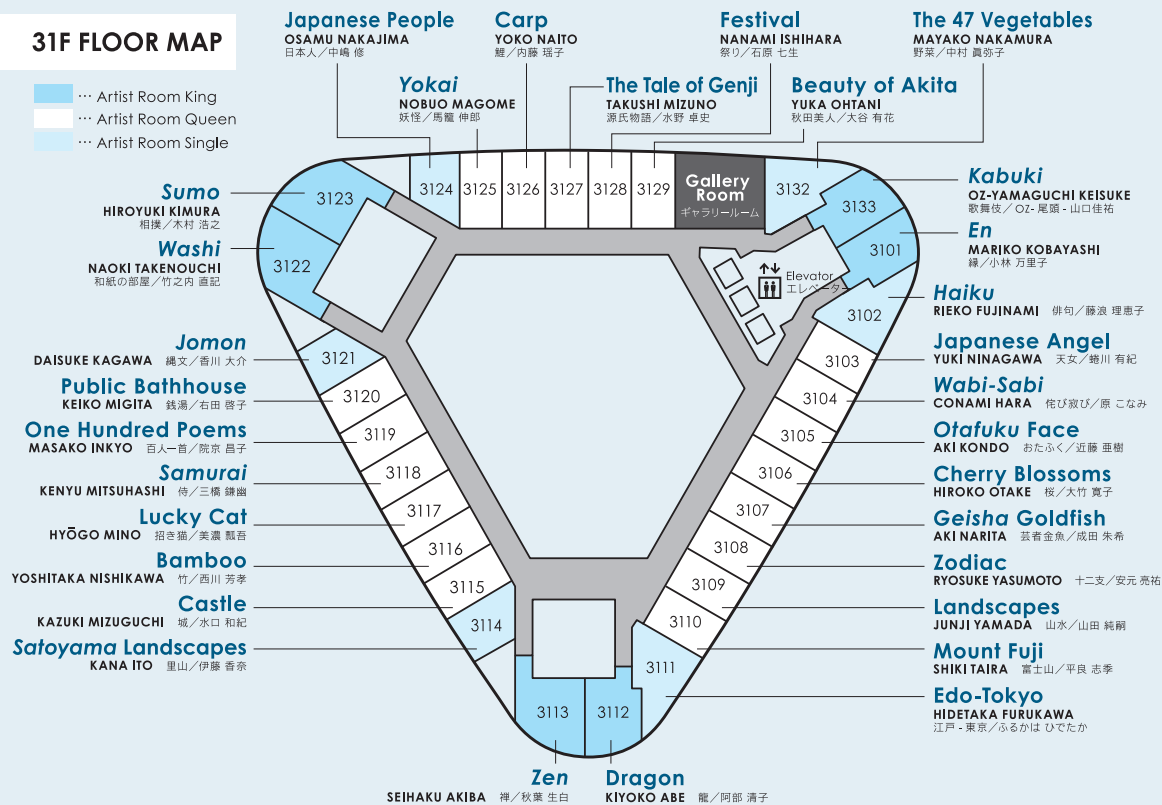
An Art Museum Where You Can Stay In Art Hotel in the Sky Where an Extraordinary Time Awaits

まるで泊まれる美術館 ここは非日常を楽しむ天空のアートホテル



31F FLOOR MAP

- ... Artist Room King
- ... Artist Room Queen
- ... Artist Room Single



Artist-in-Residence Project



Artist Rooms

An Art Museum Where You Can Stay In Art Hotel in the Sky Where an Extraordinary Time Awaits

まるで泊まれる美術館 ここは非日常を楽しむ天空のアートホテル





An Art Museum Where You Can Stay In Art Hotel in the Sky Where an Extraordinary Time Awaits
 まるで泊まれる美術館 ここは非日常を楽しむ天空のアートホテル



Artist-in-Residence Project



Artist in Hotel

| Artist Rooms

Artist Rooms Introduction

Artist Room En NO.31
by MARIKO KOBAYASHI

For every turn of Fortune's wheel, there's a time when you feel you have a secret bond with the "supernatural" beyond your own intentions and choices, which might give you or deny you these "en", and guide you somewhere else. I think that in today's changing times, we've forgotten that such inter-relationships do exist. We are connected with everything we encountered so far, and our world will continue to expand as it connects with everything we meet. I hope that your "en" with Japan, this room, and everything that happens to you in future, will be good.

An Art Museum Where You Can Stay In Art Hotel in the Sky Where an Extraordinary Time Awaits

まるで泊まれる美術館 ここは非日常を楽しむ天空のアートホテル



ROOMS



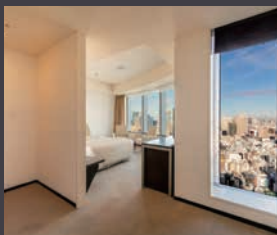
Park Suite

Room Size: 80sqm / 861sq ft
Bed Size: 1 wide king bed
W94.5in / L76.8in
Capacity: 2
No. of rooms: 1



Barrier-free Room

Room Size: 26sqm / 280sq ft
Bed Size: 2 single beds
W43.3in / L76.8in
Capacity: 2
No. of rooms: 1



Deluxe Twin /Deluxe King

DeluxeTwin
Room Size: 33sqm / 355sq ft
Bed Size: 2 single beds
W43.3in / L76.8in
Capacity: 2

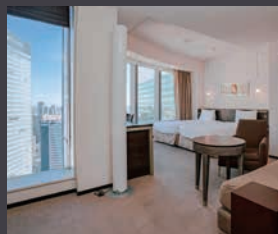


Deluxe King

Room Size: 33sqm / 355sq ft
Bed Size: 1 king bed
W78.7in / 82.7in
Capacity: 2



Artist Room King Artist Room Queen Artist Room Single



Corner Twin Corner King /Tokyo Tower Side

Corner Twin

Room Size: 26sqm / 280sq ft
Bed Size: 2 single beds
W43.3in / L76.8in
Capacity: 2

Corner King

Room Size: 26sqm / 280sq ft
Bed Size: 1 king bed
W86.6in / 76.8in
Capacity: 2



Queen / Twin /Tokyo Tower Side

Queen

Room Size: 22sqm / 237sq ft
Bed Size: 1 queen bed
W63.0in / L76.8in
Capacity: 2



Twin

Room Size: 22sqm / 237sq ft
Bed Size: 2 single bed
W43.3in / L76.8in
Capacity: 2



Single

Room Size: 19sqm / 205sq ft
Bed Size: 1 semi-double bed
W55.1in / 76.8in
Capacity: 1

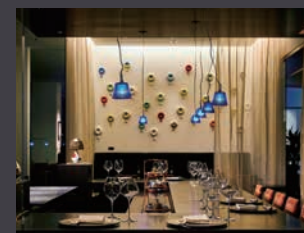


RESTAURANTS & BAR



Breakfast - ART AND GASTRONOMY FEAST

American Breakfast / Fresh Morning
ART colours Dining (25F)
7:00 a.m. – 10:30 a.m. (L.O. 10:00 a.m.)
Price: 4,500 JPY



Hanasanshou /Traditional Japanese Kaiseki cuisine

5:30 p.m. – 10:30 p.m.
Course 8:30 p.m. / A la carte 9:30 p.m. / Drink 10:00 p.m.
Closed: Sundays & Mondays



ART colours Dining /All-day dining

Tea Time 10:30 a.m. – 12:00 p.m.
Lunch 12:00 p.m. – 2:00 p.m. (L.O.)
Tea Time 2:00 p.m. – 5:00 p.m.
Dinner 5:00 p.m. – 11:00 p.m.
(Foods L.O. 10:00 p.m. / Drinks L.O. 10:30 p.m.)



Bar The Society /Classic Single Malt Scotch, Excellent Cocktails and Fine Wine

5:00 p.m. – 11:00 p.m.
(Foods L.O. 10:00 p.m. / Drinks L.O. 10:30 p.m.)

contact

Marketing Office (Shiba Park Hotel)
1-5-10 ShibaKoen, Minato-ku Tokyo 105-0011, Japan
Tel: +81 3 5470-7514
Park Hotel Tokyo | sales@parkhoteltokyo.com