



## Press Information **Park Hotel Tokyo**

**Where Every Stay is a Masterpiece**

**The Art Hotel in Tokyo**



Edition: June 2025

---

— Contact —

**Mana Yoshihara (Ms.)**

[pr@shibaparkhotel.com](mailto:pr@shibaparkhotel.com)

Shiba Park Hotel Co., Ltd. Marketing Dept.

1-5-10 Shiba-koen Minato-ku, Tokyo 105-0011

TEL : +81-3-3433-4141 FAX : +81-3-5470-7556

---

For interviews and publicity photos, please contact us at the above

## PARK HOTEL TOKYO's Concept, "ART"

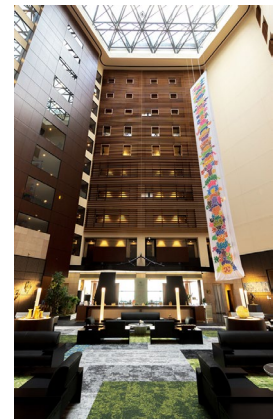


Park Hotel Tokyo, the sister hotel of Shiba Park Hotel (founded in 1948 in Minato-ku, Tokyo), opened in 2003 on the 25th to 34th floors of Shiodome Media Tower. The 25th floor houses the front desk, restaurant, and bar, offering stunning views of Tokyo Tower from the front desk. The hotel features 268 guest rooms from the 26th to the 34th floor.

Art exhibitions are held year-round in the lobbies on the B2, 1st, and 25th floors, as well as in the corridors of all guest room floors from the 26th to the 34th floor. The hotel houses over 400 art pieces at any given time, allowing guests to enjoy a gallery-like experience without leaving the premises. Additionally, the exhibited art pieces are available for purchase, offering guests the opportunity to acquire unique artworks directly from the hotel.

### **ART colours Exhibition in the Atrium**

Park Hotel Tokyo's atrium, located on the 25th floor, is a breathtaking space that welcomes all guests. Boasting one of the largest atriums in Tokyo, it offers a spacious floor and stunning views of Tokyo Tower, which change beautifully from morning to evening. This atrium hosts the "ART colours" exhibition throughout the year, celebrating the four seasons of Japan with its unique aesthetic of hospitality.



### **City View from the 25th Floor: In-house Guest Lounge**

Additionally, guests staying at Park Hotel Tokyo can enjoy a private lounge on the 25th floor. This lounge offers a relaxing environment with complimentary coffee and tea, as well as a selection of wines and beers available for purchase. Guests can either take these beverages to their rooms or enjoy them with the city view of Tokyo Tower. It's a blend of cultural elegance and modern luxury, providing an immersive experience for all visitors.



### **Tea Ceremony Experience with a Modern Twist**

Experience a modern table-style tea ceremony in a space surrounded by contemporary art. Japanese tea ceremony is an art that harmonizes the mind and body. Take a break from everyday life for a moment of peace and tranquility, and experience the beauty and serenity of the tea ceremony.

Date: Every Wednesdays at 11:00 a.m.

1st & 3rd Saturdays at 11:00 a.m.

Admission: Free for exclusive in-house guests.

Location : Atrium on 25F

\* Private lessons are also available for an additional fee.



## ARTIST ROOMS, CORRIDOR GALLERY



### **Artist Rooms**

Since December 2012, we have been running the "Artist in Hotel" project, a hotel version of the "Artist in Residence" program, where artists are invited to stay for a certain period and create their works. All rooms on the 31st floor (31 rooms) are "Artist Rooms," with artworks directly painted on the walls, turning the guest rooms into art spaces. Renovations to convert rooms on the 34th floor into Artist Rooms have also begun. As of March 31, 2025, a total of 47 rooms have been completed, with 4 more rooms in progress.



### **"Artist in Hotel" Project Awarded**

#### **Excellence in Field of Domestic and Inbound Travel Award at the Japan Tourism**

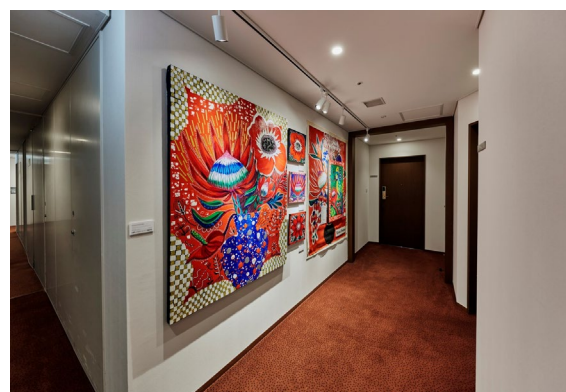
The Japan Tourism Awards recognize those who contribute to the development and expansion of the tourism industry, while also giving recognition to exceptionally sustainable initiatives by organizations and companies in Japan and overseas.

Park Hotel Tokyo has received "Excellence in Field of Domestic and Inbound Travel Award" at the Japan Tourism Awards for its "Artist in Hotel" project, for the project being pioneering, and increasing the charms of Japan.



### **Corridor Gallery**

Park Hotel Tokyo is exploring the concept of "Infinite Time and Space Amid Cognizant Japanese Beauty" and engaging in a variety of activities to help our guests further experience the appeal of Japan and Japanese culture through the medium of art. As part of our efforts, we have established the "Corridor Gallery", an exhibition space in which guests can stroll through corridors and look at pieces of art as they might at an art museum. Set in the corridors of all guest floors, from 26 to 34, the space plays on the theme "Art for all" and reflects the hotel's desire for people to feel art more closely.





## STANDARD ROOMS, AMENITIES



### **Rooms promising guests to wake up in the morning refreshed and relaxed**

The guest rooms are connected through the corridors from the atrium. From the guest rooms with their large windows, guests can enjoy a sweeping view of the city. Together with the high ceilings, the rooms create a luxurious atmosphere for guests. The beds have down covers and pocketed coils in the mattresses, which allow guests to sleep soundly in a position that does not strain the body. Massaging in guest rooms is available until 2:00 a.m. upon request, and guests may also choose to receive foot treatment in addition to regular massage. All rooms are conveniently equipped with the facilities essential for guests who are on a business stay, including Wi-Fi access to internet.



### **Use of Sustainable Amenities**

In guest rooms, we are offering THANN with over 95% plant and mineral-based ingredients as an amenity.

As part of our sustainable initiatives, we offer amenities primarily from bamboo. Items such as trays and tissue covers in guest rooms have also been replaced with eco-friendly materials like bamboo and wood. Notably, our organic bamboo toothbrushes contribute to reducing plastic waste. This toothbrush is made using patented technology and contains no chemical agents, ensuring it is safe and environmentally friendly. Bamboo is a sustainable materials that grows in just 3 to 4 years, making it an ideal alternative to plastic. Additionally, our toothpaste comes in paper packaging, supporting an eco-friendly lifestyle that begins with oral care.

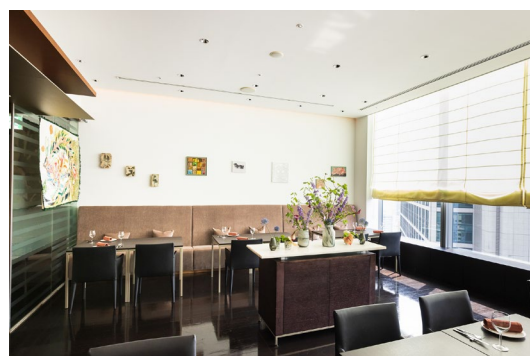


## RESTAURANTS



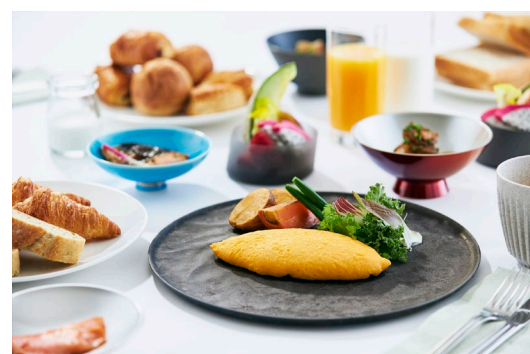
### **ART colours Dining**

Welcome to our All-day dining, where you can experience what it is like to enjoy a sumptuous meal in a sophisticated, museum-like setting surrounded by artworks.



### **Breakfast: Art and gastronomy feast**

The breakfast buffet, an elegant way to start your day, offers a menu of fresh ingredients carefully selected by the chef and Japanese cuisine. We also offer domestic free-range egg dishes that can be enjoyed in your favorite style, accompanied by domestic organic and low-pesticide vegetables, as well as an ethical menu composed entirely of plant-based foods.



### **Dinner: Rich Japanese ingredients and art in a museum-like setting**

Pizza dough made of organic wheat from Hokkaido is topped with an abundance of carefully selected ingredients from all over Japan and organic vegetables specially selected by our chef. We also offer a wide variety of other tempting appetizers and main dishes such as grilled domestic organic vegetables, Wagyu beef and porcini mushroom ragout tagliatelle, and grilled KUROGE wagyu Tokyo beef steak. We also offer vegan pizzas made with vegetarian cheese.



Location	Opening Hours		Examples from the menu
25 <sup>th</sup> floor 48 seats (117 m <sup>2</sup> )	Breakfast	7:00 A.M. - 10:30 A.M.	American breakfast 4,500 JPY
	Tea time	10:30 A.M. - 11:30 A.M.	Crème brûlée 1,400 JPY
	Lunch	11:30 A.M. - 2:30 P.M.	Sandwich 1,800 JPY
	Tea time	2:00 P.M. - 5:00 P.M.	Crème brûlée 1,400 JPY
	Dinner & Bar	5:00 P.M. - 11:00 P.M.	Pizza Margherita 3,000 JPY

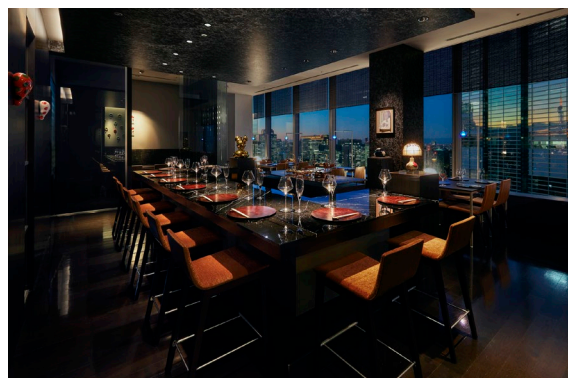
## RESTAURANT & BAR



### **Japanese Restaurant Hanasanshou**

Hanasanshou offers a hearty selection of Japanese gastronomy, a fusion of tradition and innovation. From authentic sushi to wagyu beef steak and sashimi, you can enjoy the best of Japanese culinary culture. Traditional Japanese sake, shochu, and Japanese wines are also available, allowing you to enjoy Japanese food culture to your heart's content along with fine.

\*Closed on Sundays and Mondays

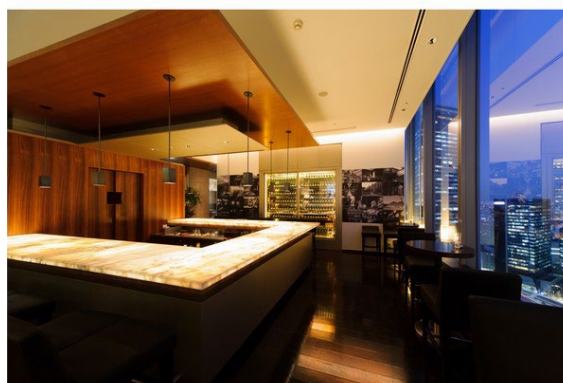


Location	Opening Hours		Examples from the menu
25 <sup>th</sup> floor 48 seats (128 m <sup>2</sup> )	Lunch	Closed	
	Dinner	5:30 P.M. - 10:30 P.M.	Course dinner from 11,500 JPY • a la carte

(Prices include consumption tax and 15% service charge)

### **Bar The Society**

Cocktails crafted by our skilled bartenders emphasize the unique bar skills and subtlety of Japan. At The Society, you can experience cocktails that express Japanese aesthetics and are made with an abundance of domestic and international herbs and seasonal fruits. In addition, we offer a selection of local sake from around Japan and approximately 100 single malt whiskies imported from Scotland. Please enjoy the beautiful night view from the large windows and the soothing music.



We are honored that our bar, "The Society," has been featured in 50 Best Discovery.



Location	Opening Hours	Examples from the menu
25 <sup>th</sup> floor 10 seats (46 m <sup>2</sup> )	5:00 P.M. - 11:00 P.M. Food 10:00 P.M. L.O. / Drink 10:30 P.M. L.O.	Drinks from 2,000 JPY

(Prices include consumption tax and 15% service charge)

## PRIVATE DINING ROOMS



### **Blue Room**

A 65sqm (700sqf) private room exclusively for small parties of up to 16 people. This private area is the perfect venue for an elegant meal with special guests or an especially important event, ceremony or meeting. Whatever the occasion, the spectacular view from this private salon on the 26th floor will enhance the experience of a memorable event.

\*Closed on Sundays and Mondays



Location / Size / Hours	Style & Capacity	Menu Price
26 <sup>th</sup> floor 5:30 P.M.~9:00 P.M.	8 – 12 guests Room Charge: 15,000 JPY (3 hours)	Japanese Cuisine ¥15,000 / ¥18,000

(Prices include consumption tax and 15% service charge)

### **Scarlet Room**

Gorgeous Salon Offering Elegant Cuisine

Enjoy cuisine with elegant cutlery. The salon caters for dinner, and can alternatively be used for meetings or weddings.

\*Closed on Sundays and Mondays



Location / Size / Hours	Style & Capacity	Menu Price
26 <sup>th</sup> floor 5:30 P.M.~9:00 P.M.	10 – 24 guests Room Charge: 25,000 JPY (3 hours)	Japanese Cuisine ¥15,000 / ¥18,000

(Prices include consumption tax and 15% service charge)



## COFEE SHOP, ART SHOP AND RELAXATION



### **Coffee Shop - News Art Café**

Coffee shop that offers to go service only

Closed on Sundays, Saturdays and Holidays

Location	Opening Hours	Examples from the menu
1 <sup>st</sup> floor	12:00 P.M. ~ 4:00 P.M.	Coffee 600 JPY ~

(Prices include consumption tax. No service charge added.)

### **Art Shop Tanagokoro-g**

Exhibition sales of traditional Japanese handcrafts will give an aesthetic sense of Japan through art.

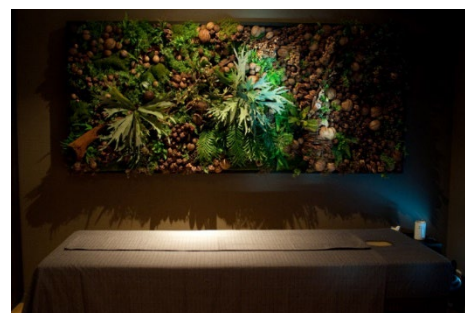
Closed: Tuesdays, Thursdays, Weekends & National Holidays



Location	Opening Hours	Examples
1 <sup>st</sup> floor	11:30 A.M. ~ 3:00 P.M.	Kimekomi-doll, etc

### **THANN Sanctuary**

THANN Sanctuary is a relaxation space of exotic scents which will look after you in real Thai style. You will be sure to have a fabulous time. Both men and women are welcome for the treatment.



Location	Opening hours	Example of treatments	Rates and time required
26 <sup>th</sup> floor	11:00 A.M. - 8:00 P.M. (Last check-in: 6:30 P.M.)	THANN Sanctuary Signature Massage  * The salon cannot give aromatherapy treatments to pregnant guests.	120min 26,400 JPY

(Prices include consumption tax)



# FACILITY GUIDE



**Name:** Park Hotel Tokyo  
**Address:** Shiodome Media Tower, 1-7-1 Higashi Shimbashi, Minato-ku, Tokyo 105-7227  
**Inquiries:** TEL: +81 (0)3-6252-1111 FAX: +81 (0)3-6252-1001  
 URL: <https://parkhoteltokyo.com/>  
**Reservations:** TEL: +81 (0)3-6252-1100 FAX: +81 (0)3-6252-1122  
 E-mail: [reservation@parkhoteltokyo.com](mailto:reservation@parkhoteltokyo.com)  
**Opening:** September 1, 2003  
**Management:** Shiba Park Hotel Co., Ltd.  
 Address: 1-5-10 Shiba Koen, Minato-ku, Tokyo, TEL: +81 (0)3-3433-4141  
 President and CEO: Rentaro Yanase  
**Construction:** B4 floor (parking area), B2, 1st and 3rd floors (entrance), 25th to 34th floor  
**Room types and rates:** 268 (from 26th to 34th floor)

Room type	No. of rooms	Area	Rate
Single	36	19m <sup>2</sup>	¥65,000
Queen / Twin	96 / 47	22-24 m <sup>2</sup>	¥70,000
Corner Twin	6	26m <sup>2</sup>	¥77,000
Corner King Tokyo Tower Side	11	26m <sup>2</sup>	¥84,000
Deluxe Twin	5	33m <sup>2</sup>	¥82,000
Deluxe King	7	33m <sup>2</sup>	¥85,000
Deluxe Twin (Triple)	11	33m <sup>2</sup>	¥88,000
Artist Room Single	7	19m <sup>2</sup>	¥70,000
Artist Room Queen	33	22-24 m <sup>2</sup>	¥75,000
Artist Room King	7	26~33 m <sup>2</sup>	¥90,000
Park Suite (Wide King)	1	80m <sup>2</sup>	¥150,000
Barrier-free	1	26m <sup>2</sup>	¥77,000

(Rates include consumption tax, 15% service charge and accommodation tax.)

**Check in / out time:** 15:00 / 11:00  
**Parking:** 20 cars (B4F, Times 24 / ¥2,000 for overnight stay)  
**Dining:** Hanasanshou (Japanese), ART colours Dining (Restaurant),  
 The Society (Bar), News Art Café (Cafe), Room Service  
**Other facilities:** Private Dining Rooms (Blue Room & Scarlet Room),  
 THANN Sanctuary (Relaxation Salon), Coin Laundry  
**Breakfast:** American Breakfast / Fresh Morning  
 Price 4,500 JPY, (7-12 years old: 2,250 JPY, 0-6 years old: Buffet free)

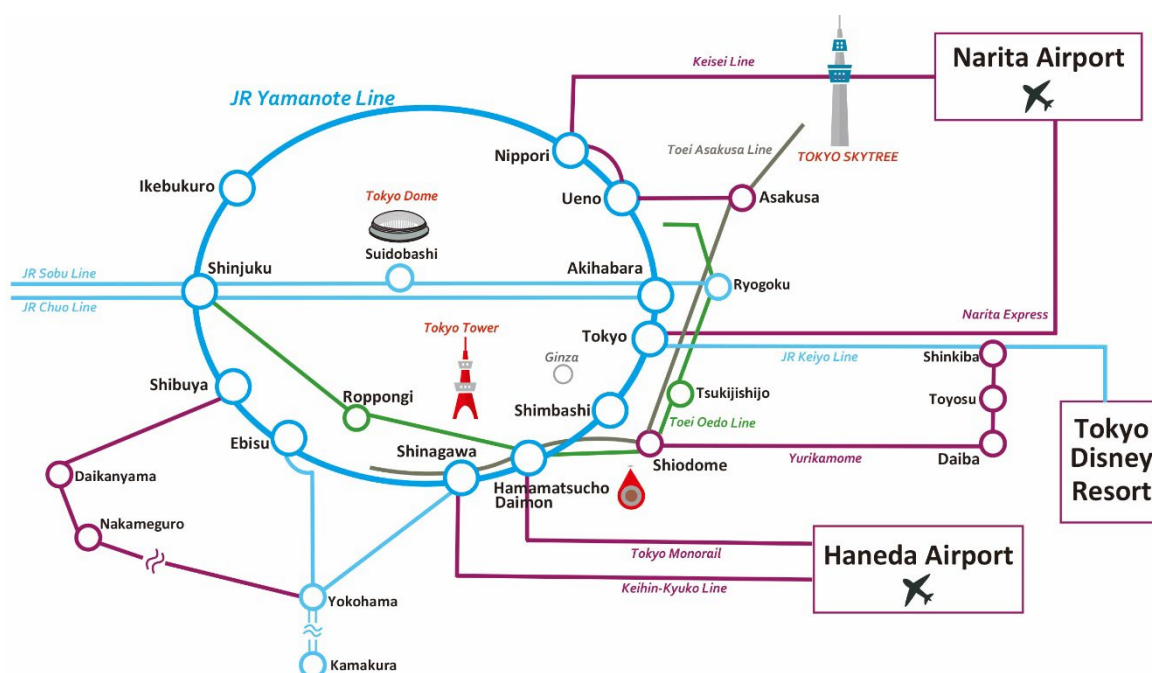
## ACCESS INFORMATION



### Access to the Park Hotel Tokyo

- By Train**
- 1 minute from Shiodome Station on the subway Toei Oedo Line
  - 1 minute from Shiodome Station on the Tokyo Waterfront New Transit Yurikamome
  - 7 minutes from Shimbashi Station on the JR Line; subways: Tokyo Metro Ginza Line and Toei Asakusa Line
- By Car**
- 8 minutes from JR Tokyo Station
  - 60 minutes from Narita Airport and 20 minutes from Haneda Airport
  - 2 minutes from the Shiodome Interchange on the Inner Circular Route (Shuto Expressway).

### Railway Map



## Our Sister Hotel

### Shiba Park Hotel

- 【Address】 1-5-10 Shiba Koen, Minato-ku, Tokyo 105-0011
- 【Website】 <https://en.shibaparkhotel.com>
- 【Inquiry】 TEL: +81 (0)3-3433-4141 FAX: +81 (0)3-3433-4142