



# Shiba Park Hotel

Where your Tokyo Odyssey begins

The Library Hotel in Tokyo



---

— Contact —

**Public Relations officer**

[pr@shibaparkhotel.com](mailto:pr@shibaparkhotel.com)

Shiba Park Hotel Co., Ltd. Marketing Dept.

1-5-10 Shiba-koen Minato-ku, Tokyo 105-0011

TEL : +81-3-3433-4141 FAX : +81-3-5470-7556

---

For interviews and publicity photos, please contact us at the above

# History, Design, Omotenashi



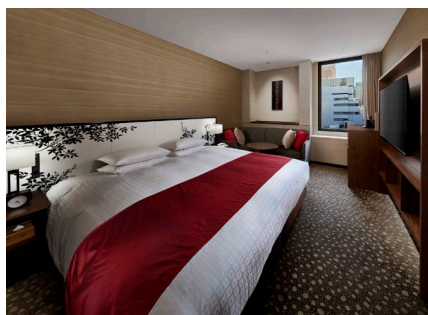
## The long-established hotel, founded in 1948

Shiba Park Hotel was established in 1948, and has taken pride in and responsibility for the traditions and culture of this lush region with a historic turf. Since its establishment, our hotel has always valued Omotenashi mind to become a hotel that continues to be loved by each and every one of our guests.

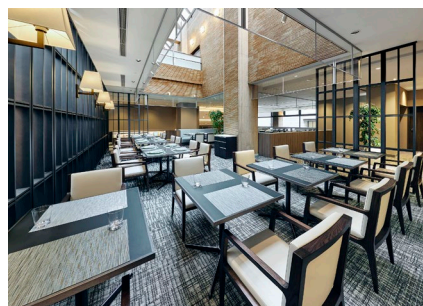


## Full Hotel Renovation Completed (2020-2023)

We renovated our entire hotel from 2020 to 2023. With this renewal, the hotel has taken the opportunity to become a library hotel with a book collection centered on the city's culture, people, and history. History and culture are spun through the ages, leading to a better and richer tomorrow. This is the kind of hotel we are aiming for.



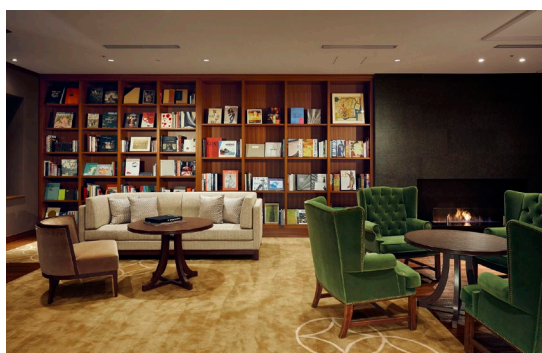
Standard King Room



The Dining, a new restaurant

## Libraries with a Diverse Collection of Books

We offer libraries throughout the hotel, curated by Ginza Tsutaya Books, featuring a wide range of 1,500 books from Japanese culture to architecture, photography, and art. Enjoy serendipitous encounters and your time spent with us.



1F Library Lounge



2F Foyer -Book & Culture

## Drink Corner, Traditional Japanese Culture



### Relaxing Drink Corner

At the front desk on the first floor, we offer a variety of beverages through self-service, including complimentary coffee and tea, as well as paid options like wine and beer. You can either take these drinks back to your room or enjoy them in the relaxing spaces within the hotel.



### Experience Traditional Japanese Culture

We offer two traditional Japanese cultural experiences: the environmentally friendly art of "Kintsugi" and the modern "Table-Style Tea Ceremony."

**Kintsugi** - The Art of Creating New Beauty Kintsugi is a traditional Japanese method of repairing broken or chipped ceramics by using lacquer and decorating the repaired areas with metal powders such as gold. We provide workshops where you can safely experience this art using simplified repair techniques.



Date: On request basis

Hours: 10:00 a.m. / 4:00 p.m. \*Approx 60 minutes

Admission: From 8,000JPY for 1 guest

**Table-Style Tea Ceremony** - Experience Modern Culture In our lobby, surrounded by approximately 1,500 books and traditional crafts, you can enjoy a modern table-style tea ceremony performed by the Tsubaki-no-Kai. This special experience allows you to savor the elegance of the tea ceremony in a serene atmosphere.



Date: Every Thursdays and 1st & 3rd Sundays

Hours: 10:00 a.m. – 10:45 a.m.

Admission: Free for exclusive in-house guests.

Location: Entrance lobby on 1F



# Guest Rooms



All guest rooms were renovated on 2022 and 2023. Whether for business or leisure, we hope that our hotel meets your needs and provides a comfortable stay.



## Junior Suite (7 rooms)

【Capacity】 44 m<sup>2</sup>

【Bed】 2 beds / width 1,100 mm × length 1,950 mm

【Guests】 2



## Deluxe King (8 rooms)

【Capacity】 32 m<sup>2</sup>

【Bed】 1 bed/width 2,200 mm × length 2,050 mm

【Guests】 2

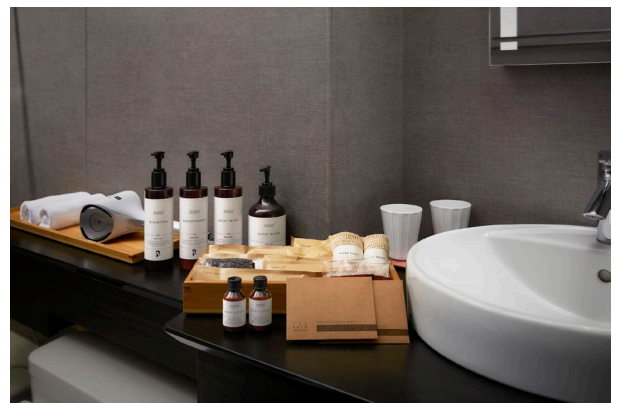
Superior Kings: 8 rooms, 22 m<sup>2</sup>

Standard Kings: 86 rooms, 21 m<sup>2</sup>   Standard Twins: 57 rooms, 21 m<sup>2</sup>

Standard Triples: 25 rooms, 21~22 m<sup>2</sup>   Deluxe Twins : 7 rooms (32 m<sup>2</sup>)

## Environmentally Friendly Amenities

As part of Shiba Park Hotel's sustainable initiatives, we offer amenities primarily from bamboo. Items such as trays and tissue covers in guest rooms have also been replaced with eco-friendly materials like bamboo and wood. Notably, our organic bamboo toothbrushes contribute to reducing plastic waste. This toothbrush is made using patented technology and contains no chemical agents, ensuring it is safe and environmentally friendly.



**Consumable Amenities:** shampoo (refillable), conditioner (refillable), body soap (refillable), hand soap (refillable), body lotion (mini bottle), toothbrush, razor, hairbrush, vanity kit, body towel, women's cosmetics set, bath salt, mineral water, tea, etc.

**Fixed Amenities:** Wi-Fi (free), refrigerator, TV, bath amenities, bath towels, nightwear, slippers, hair dryer, iron (steam type), electric kettle, wine glasses, stationery set, etc.

# Restaurant The Dining (1F)



At The Dining, you can savor three types of cuisine – Japanese, Western, and Chinese. Catering to both adults and children, everyone can enjoy their meals without stress. For instance, adults might prefer Japanese dishes while children opt for Western fare. We also offer vegan-friendly course meals and à la carte options, ensuring we meet the diverse needs of our guests.



Western Cuisine



Japanese Cuisine



Vegan-friendly meals

## Blissful Afternoon Tea

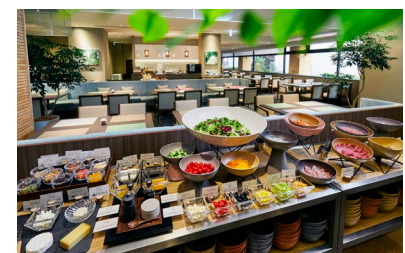
At The Dining, we have offer “Blissful afternoon tea.” You are always welcome to enjoy our 1,500 books. Please enjoy a blissful time with your favorite black tea flavor, along with a book you like in hand, and sweets delivered from three types of restaurants that includes Japanese, Chinese, and Western cuisine. We are happy to accept reservations from one person.



Blissful afternoon tea

## A Perfect Start to Your Day: Breakfast Buffet

Start your day at The Dining with a carefully curated buffet featuring the finest Japanese, Western, and Chinese breakfast options, designed to suit every palate.



Breakfast

## Restaurant: The Dining

Hours: 7:00a.m. – 9:00p.m. (LO 8:30p.m.)

\*Afternoon Tea - Reservation basis

Capacity(300 m<sup>2</sup>): 82seats, 4 private rooms

Tel: +81-3-5470-7671

Budget: Lunch ¥ 3,000, Dinner ¥ 8,000

Service fee: 15%



The Dining

## Banquet Hall (2F)



There are four event spaces that can accommodate up to 150 people (sitting), and can be used for various occasions such as business meetings, after-parties, and reunions.



Rose

Room charge / 1 hour 115,500JPY



Ivy

Room charge / 1 hour 46,200JPY



Iris / Azalea

Room charge / 1 hour 18,700JPY

Azalea

Room charge / 1 hour 16,500JPY

### 【Capacity】

#### Banquet・Party

Buffet: Standing / 20 to 150 persons, Sitting / 20 to 128 persons

Course or set menu: Sitting / 4 to 160 persons

#### Meeting

Schools / 20 to 192 persons

※Tax included

※15% service charge will be added to your bill

# Hotel Overview



【Hotel Name】 Shiba Park Hotel

【Address】 1-5-10 Shibakoen, Minato-ku, Tokyo 105-0011, Japan

URL <https://www.shibaparkhotel.com/en/>

Email [reservation@shibaparkhotel.com](mailto:reservation@shibaparkhotel.com)

【Contact】 TEL : +81-3-3433-4141 FAX : +81-3-3433-4142

【Management】 Shiba Park Hotel Co., Ltd.

President and CEO: Rentaro Yanase

【Guest Room】 198 Non-Smoking rooms

Room type	No. of rooms	Area	Rate
Standard Twin	57	21 m <sup>2</sup>	60,000JPY
Standard King	86	21 m <sup>2</sup>	60,000JPY
Standard Triple	25	21~22 m <sup>2</sup>	64,000JPY
Superior King	8	22 m <sup>2</sup>	63,000JPY
Deluxe Twin	7	32~39 m <sup>2</sup>	71,000JPY
Deluxe King	8	32 m <sup>2</sup>	69,000JPY
Junior Suite	7	44 m <sup>2</sup>	85,000JPY

【Check-In】 3:00p.m. 【Check-Out】 11:00a.m.

【Food & Beverage Facilities】 Four banquet rooms, The Dining (Restaurant)

【Other Facilities】 Library lounge, Smoking room, Parking lot, Laundromat,  
Microwave, Ice machine

【Service】 Concierge, Room service, Sightseeing arrangements,  
Water dispenser, Laundry service, Parcel shipping, Currency exchange, Free Wi-Fi

【Breakfast】 Buffet Style

Guests 13 years of age or older 3,850JPY

Guests between 7 to 12 years old 1,925JPY

Guests under 6 years old Free of charge

\*15% service charge will be added to your bill



# Access



## 《By train》

Approximately 8 minute walk from JR Hamamatsucho Stn. (North Exit) or Tokyo Monorail Hamamatsucho Stn.

Approximately 4 minute walk from Daimon Stn. (A6 Exit)

Approximately 2 minute walk from Onarimon Stn. (A2 Exit)

## 《By taxi》

Approximately 5 minutes from Shibakoen Exit of Inner Circular Route (Shuto Expressway)

Approximately 30 minutes from Haneda airport

Approximately 90 minutes from Narita airport

## 《Map》



Sister Hotel

Park Hotel Tokyo

【Address】 Shiodome Media Tower 1-7-1 Higashi Shimbashi, Minato-ku, Tokyo, 105-7227

【URL】 <https://parkhoteltokyo.com/>

【Contact】 TEL : +81-3-6252-1111 / FAX : +81-3-6252-1001