



Press Information
Park Hotel Tokyo

Where Every Stay is a Masterpiece

The Art Hotel in Tokyo



— Contact —

Public Relations officer

pr@shibaparkhotel.com

Shiba Park Hotel Co., Ltd. Marketing Dept.

1-5-10 Shiba-koen Minato-ku, Tokyo 105-0011

TEL : +81-3-3433-4141 FAX : +81-3-5470-7556

For interviews and publicity photos, please contact us at the above

ART: Concept of PARK HOTEL TOKYO



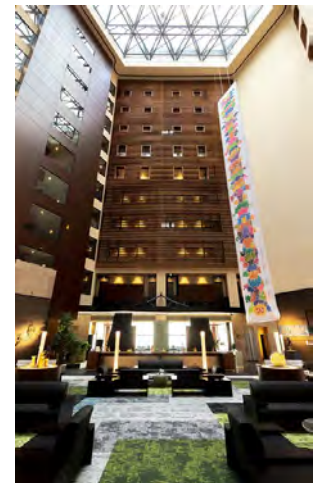
Park Hotel Tokyo, the sister hotel of Shiba Park Hotel (founded in 1948 in Minato-ku, Tokyo,) opened in 2003 and occupies the 25th to the 34th floors of Shiodome Media Tower. The 25th floor features the reception counter, restaurant, and bar, offering stunning views of the Tokyo skyline. The hotel offers 268 guest rooms spanning from the 26th to the 34th floors.

Art exhibitions are held year-round not only on the 25th-floor reception level, but also in the corridors of all guest room floors from the 26th to the 34th floors. The hotel displays over 400 artworks at any given time, allowing guests to enjoy a museum-like experience without leaving the premises.

Additionally, the exhibited artworks are available for purchase, providing guests the opportunity to acquire unique artworks directly from the hotel.

ART colours Exhibition in the Atrium

The atrium on the 25th floor of Park Hotel Tokyo is a breathtaking space that welcomes all guests. As one of the largest atria in Tokyo, it offers a spacious floor plan and stunning views of Tokyo Tower, which change beautifully throughout the day. This atrium hosts the “ART colours” exhibition year-round, celebrating Japan’s four seasons with a distinctive aesthetic of hospitality.



City View from the 25th Floor: Executive Museum Lounge

In-house guests can enjoy access to a private lounge on the 25th floor. The lounge provides a relaxing atmosphere with complimentary coffee and tea, along with a selection of wines and beers available for purchase. Guests may either take their beverages to their rooms or unwind in the lounge while enjoying drinks with a view of Tokyo Tower. The space combines cultural elegance with modern luxury, offering an immersive experience for every guest.



Tea Ceremony Experience with a Modern Twist

Guests can participate in a modern table-style tea ceremony in a setting surrounded by contemporary art. The Japanese tea ceremony is an art form that harmonizes mind and body. This experience offers a tranquil moment away from the bustle of daily life, inviting participants to discover the beauty and serenity of traditional Japanese culture.

Date: Every Wednesday at 11:00 a.m.

1st & 3rd Saturdays at 11:00 a.m.

Admission: Free for exclusive in-house guests

Location : Atrium on 25th floor

* Private lessons are also available for an additional fee.



Artist Rooms with Corridor Galleries



Artist Rooms

Since December 2012, Park Hotel Tokyo has been running the “Artist in Hotel” project, a hotel-based adaptation of the “Artist in Residence” program. Through this initiative, artists are invited to stay at the hotel for a certain period and create original artworks. All rooms on the 31st floor (31 rooms in total) have been transformed into “Artist Rooms,” with artworks painted directly onto the walls, making each room a unique art space. Renovation work is currently underway to convert rooms on the 34th floor into additional Artist Rooms.



“Artist in Hotel” Project Recognized with Prestigious Award

Park Hotel Tokyo’s “Artist in Hotel” project has been honored with the **Excellence in the Field of Domestic and Inbound Travel Award** at the **Japan Tourism Awards**.

The Japan Tourism Awards recognize individuals, organizations, and companies—both in Japan and overseas—that contribute to the development and expansion of the tourism industry, with a particular focus on innovative and sustainable initiatives.

Park Hotel Tokyo was selected for this prestigious award in recognition of its pioneering efforts to enhance the appeal of Japan through the integration of contemporary art into the guest experience. The “Artist in Hotel” project was praised for its originality and its significant contribution to promoting Japan’s cultural richness to both domestic and international travelers.



Corridor Gallery

Park Hotel Tokyo continues to explore the concept of “Infinite Time and Space Amid Cognizant Japanese Beauty,” engaging in a variety of artistic activities to provide guests with a deeper experience of Japanese culture through art. As part of this initiative, the hotel has established the “Corridor Gallery”—an exhibition space that allows guests to stroll through the corridors and enjoy artworks as if they were in a museum. These gallery spaces are located on all guest room floors from the 26th to the 34th floors and reflect the hotel’s theme of “Art for All,” expressing a desire to bring people closer to art in their everyday surroundings.



Room Amenities



Rooms Designed to Leave Guests Refreshed and Relaxed

The guest rooms at Park Hotel Tokyo are connected via corridors that extend from the central atrium. Each room features expansive windows that offer sweeping views of the city. Together with the high ceilings, these architectural elements create a spacious and luxurious atmosphere.

The beds are fitted with down comforters and pocketed coil mattresses, allowing guests to enjoy restful sleep with minimal physical strain. For added relaxation, an in-room massage service is available upon request until 2:00 a.m., including options for foot treatments in addition to standard massages. All rooms are also equipped with essential amenities for business travelers, such as high-speed Wi-Fi access.



Sustainable Amenities for a Greener Stay

In line with the hotel's commitment to sustainability, guest rooms feature amenities from THANN, a brand known for using over 95% plant- and mineral-based ingredients. Additionally, many of the in-room items—such as trays and tissue covers—have been replaced with eco-friendly alternatives made from bamboo and wood.

One standout initiative is the use of organic bamboo toothbrushes, developed using patented technology and containing no chemical agents. These toothbrushes are safe for both users and the environment. Bamboo, a highly sustainable material that matures in just 3 to 4 years, serves as an excellent substitute for plastic. Even the toothpaste packaging is made of paper, reflecting the hotel's intention to support eco-conscious lifestyles starting with daily routines like oral care.

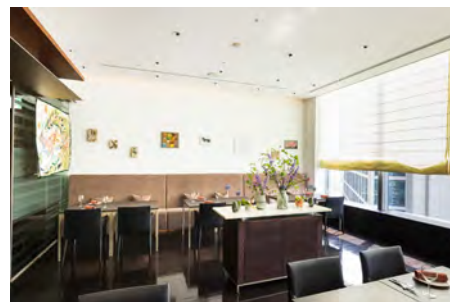


Restaurants & Bar



ART colours Dining

Welcome to our all-day dining restaurant, where you can enjoy a sumptuous meal in a sophisticated, museum-like setting surrounded by artwork. Park Hotel Tokyo welcomes guests to its all-day dining restaurant, where they can enjoy a sumptuous meal in a refined, museum-like atmosphere surrounded by captivating artwork.



Breakfast: A Feast of Art and Gastronomy

The breakfast buffet offers an elegant way to start the day, featuring fresh ingredients carefully selected by the hotel's chef alongside traditional Japanese dishes. Guests can enjoy domestic free-range egg dishes prepared in their preferred style, complemented by organic and low-pesticide vegetables sourced from Japan. A fully plant-based ethical menu is also available, catering to a variety of dietary preferences.



Dinner: Rich Japanese Ingredients in a Museum-Like Setting

In the evening, the restaurant offers a diverse selection of dishes crafted with premium ingredients from across Japan. The organic pizza dough, made from Hokkaido-grown wheat, is topped with carefully chosen local produce and vegetables specially selected by the chef. The dinner menu includes an array of tempting appetizers and main courses, such as grilled organic domestic vegetables, tagliatelle with Wagyu beef and porcini mushroom ragout, and grilled KUROGE wagyu beef steak. Vegan options, including pizzas made with plant-based cheese, are also available, ensuring a dining experience that is both inclusive and artfully curated.



Location	Hours		Sample Menu
25 th floor 48 seats	Breakfast	7:00 A.M. - 10:00 A.M.	American breakfast / Fresh morning
	Cafe	10:30 A.M. - 12:00 A.M.	Salad / BLT sandwich / Tiramisu
	Lunch	12:00 P.M. - 2:00 P.M.	Pasta / Grilled salmon / Chicken confit
	Cafe	2:00 P.M. - 5:00 P.M.	Assorted cheese / Crème brûlée
	Dinner & Bar	5:00 P.M. - 11:00 P.M.	Pizza / Pasta / Wagyu beef steak

Restaurants & Bar



Japanese Restaurant Hanasanshou

Hanasanshou offers a hearty selection of Japanese cuisine, blending tradition with innovation. From authentic sushi and sashimi to wagyu beef steak, guests can savor the best of Japanese culinary culture. A wide selection of traditional Japanese beverages—including sake, shochu, and Japanese wines—is also available, allowing diners to fully immerse themselves in the flavors of Japan.

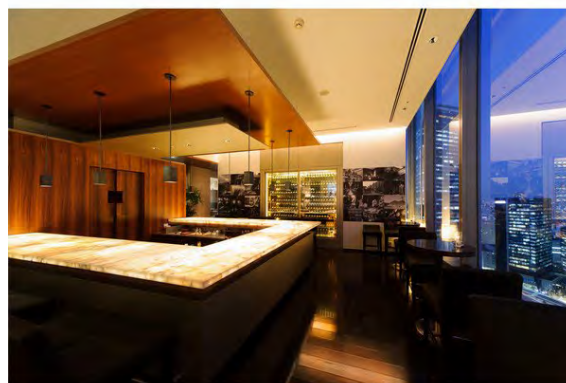
*Closed on Sundays and Mondays.



Location	Hours		Sample Menu
25 th floor 52 seats	Lunch	Closed	
	Dinner	5:30 P.M. - 10:30 P.M.	Course meal / A la carte

Bar The Society

At The Society, skilled bartenders craft cocktails that highlight the refined techniques and subtle artistry of Japanese mixology. Guests can enjoy drinks that reflect Japanese aesthetics, made with a variety of domestic and international herbs and seasonal fruits. The bar also offers a curated selection of local sake from across Japan, as well as approximately 100 single malt whiskies imported from Scotland. The space features large windows with a stunning night view, accompanied by soothing music.



The Society has been proudly featured in “50 Best Discovery” for its outstanding bar experience.



Location	Hours	Sample Menu
25 th floor 10 seats	5:00 P.M. - 11:00 P.M. Food L.O. 10:00 P.M. / Drink L.O. 10:30 P.M.	Whisky / Wine / Beer / Cocktail / High tea

Private Dining Rooms



Blue Room

Blue Room is a 65sqm (700sq ft) private salon designed exclusively for small gatherings of up to 16 guests. Ideal for hosting elegant meals with special guests, or for significant events, ceremonies, or meetings, this intimate venue provides a refined setting. Located on the 26th floor, it offers a stunning panoramic view that enhances every memorable occasion.

*Closed on Sundays and Mondays.



Location & Hours	Capacity & Price	Menu
26 th floor 5:30 P.M. - 9:00 P.M.	8 – 12 guests 15,000JPY / 3 hours	Japanese Cuisine

(All prices are inclusive of tax and 15% service charge)

Scarlet Room

Scarlet Room is a sophisticated salon offering elegant dining experiences with refined tableware. In addition to dinner service, the space can be arranged for meetings, ceremonies, or even weddings. It is a versatile venue that blends beauty with functionality.

*Closed on Sundays and Mondays.



Location & Hours	Capacity & Price	Menu
26 th floor 5:30 P.M. - 9:00 P.M.	10 – 24 guests 25,000JPY / 3 hours	Japanese Cuisine

(All prices are inclusive of tax and 15% service charge)

Coffee Shop, Art Shop, and Relaxation



News Art Café

Available for take away only.

*Close on Sundays, Saturdays & national holidays

Location	Hours	Sample Menu
1st floor	12:00 P.M. - 4:00 P.M.	Coffee / Green tea / Soy latte

Art Shop Tanagokoro-g

An exhibition and sale of traditional Japanese handcrafts offers visitors an aesthetic experience of Japan through art.

*Close on Tuesdays, Thursdays, weekends & national holidays



Location	Hours	Sample Items
1st floor	11:30 A.M. - 3:00 P.M.	Kimekomi-doll / Edo Kiriko

THANN Sanctuary

THANN Sanctuary is a relaxation space filled with exotic scents, offering authentic Thai-style care. It provides a luxurious and rejuvenating experience for all guests. Treatments are available for both men and women.

*Aromatherapy treatments are not available for pregnant guests.



Location	Hours	Treatments	Price
26 th floor	11:00 A.M. - 8:00 P.M. Last check-in: 6:30 P.M.	THANN Sanctuary Signature Massage	26,400 JPY/120 min

(Price is inclusive of tax)

FACILITY GUIDE



- 【Hotel Name】** Park Hotel Tokyo
【Address】 Shiodome Media Tower 25F, 1-7-1 Higashi Shimbashi, Minato-ku, Tokyo 105-7227
 WEB <https://parkhoteltokyo.com/>
【Contact】 Email: reservation@parkhoteltokyo.com
 TEL: +81-3-6252-1111 FAX: +81-3-6252-1001
 Reservations: TEL: +81-3-6252-1100 FAX: +81-3-6252-1122
【Opening】 September 1, 2003
【Management】 Shiba Park Hotel Co., Ltd.
 President and CEO: Rentaro Yanase
 Address: 1-5-10 Shibakoen, Minato-ku, Tokyo 105-0011
 TEL: +81-3-6252-1100
【Guest Room】 268 Non-Smoking rooms (from 26th to 34th floor)

Room type	No. of rooms	Size	Rate (JPY)
Single	36	19 sqm	65,000
Queen / Twin	96 / 47	22-24 sqm	70,000
Corner Twin	6	26 sqm	77,000
Corner King Tokyo Tower Side	11	26 sqm	84,000
Deluxe Twin	5	33 sqm	82,000
Deluxe King	7	33 sqm	85,000
Deluxe Twin (Triple)	11	33 sqm	85,000
Artist Room Single	7	19 sqm	70,000
Artist Room Queen	33	22-24 sqm	75,000
Artist Room King	7	26-33 sqm	90,000
Park Suite (Wide King)	1	80 sqm	150,000
Barrier-free	1	26 sqm	77,000

(All prices are inclusive of tax and 15% service charge)

- Check in / out time: 15:00 / 11:00
 Parking: 20 cars (B4F, Times 24 / 2,000JPY for overnight stay)
 Dining: Hanasanshou (Japanese), ART colours Dining (Restaurant),
 The Society (Bar), News Art Café (Cafe), Room Service
 Other facilities: Private Dining Rooms (Blue Room & Scarlet Room),
 THANN Sanctuary (Relaxation Salon), Coin Laundry
 Breakfast: American Breakfast / Fresh Morning
 Price 4,500JPY, (7-12 years old: 2,250JPY, 0-6 years old: Free)

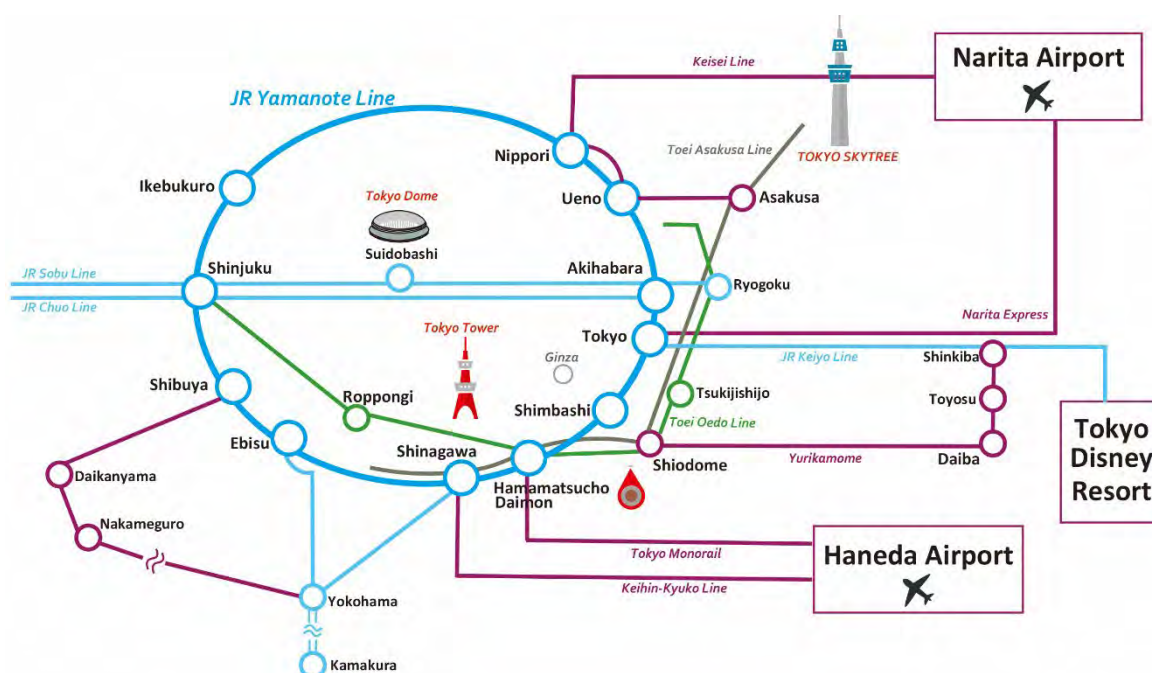
Location



Access to the Park Hotel Tokyo

- By Train**
- 1 minute from Shiodome Station on the subway Toei Oedo Line
 - 1 minute from Shiodome Station on the Tokyo Waterfront New Transit Yurikamome
 - 7 minutes from Shimbashi Station on the JR Line; subways: Tokyo Metro Ginza Line and Toei Asakusa Line
- By Car**
- 8 minutes from JR Tokyo Station
 - 60 minutes from Narita Airport and 20 minutes from Haneda Airport
 - 2 minutes from the Shiodome Interchange on the Inner Circular Route (Shuto Expressway).

Railway Map



Our Sister Hotel

Shiba Park Hotel

- 【Address】 1-5-10 Shiba Koen, Minato-ku, Tokyo 105-0011
- 【Website】 <https://www.shibaparkhotel.com/en/>
- 【Inquiry】 TEL: +81 (0)3-3433-4141 FAX: +81 (0)3-3433-4142